



***U.S. ARMY  
CHILD, YOUTH & SCHOOL SERVICES  
FORT LEE, VIRGINIA***



U.S. Army Child, Youth  
& School Services

***“PROVIDING THE BEST  
FOR THOSE WE SERVE”***

Donna L. Nelson  
Chief, Child, Youth & School Services



# U.S. ARMY CHILD, YOUTH & SCHOOL SERVICES



U.S. Army Child, Youth  
& School Services

- **MISSION**

Army Child, Youth & School Services programs exist to support military readiness by reducing the conflict between a Soldier's mission requirements and his or her parental responsibilities.

- **GOALS**

- Facilitate *family self-reliance* and reinforce Army values
- Ensure *availability of predictable programs and services* for eligible children and youth ages 4 weeks to 18 years
- Maintain *affordability of child and youth programs* for both patrons and the Army through resourcing metrics, operational efficiencies and seamless service delivery
- Establish and *sustain program quality as a "benchmark for the Nation"* in accordance with statutory requirements, DOD policy and Army Standards



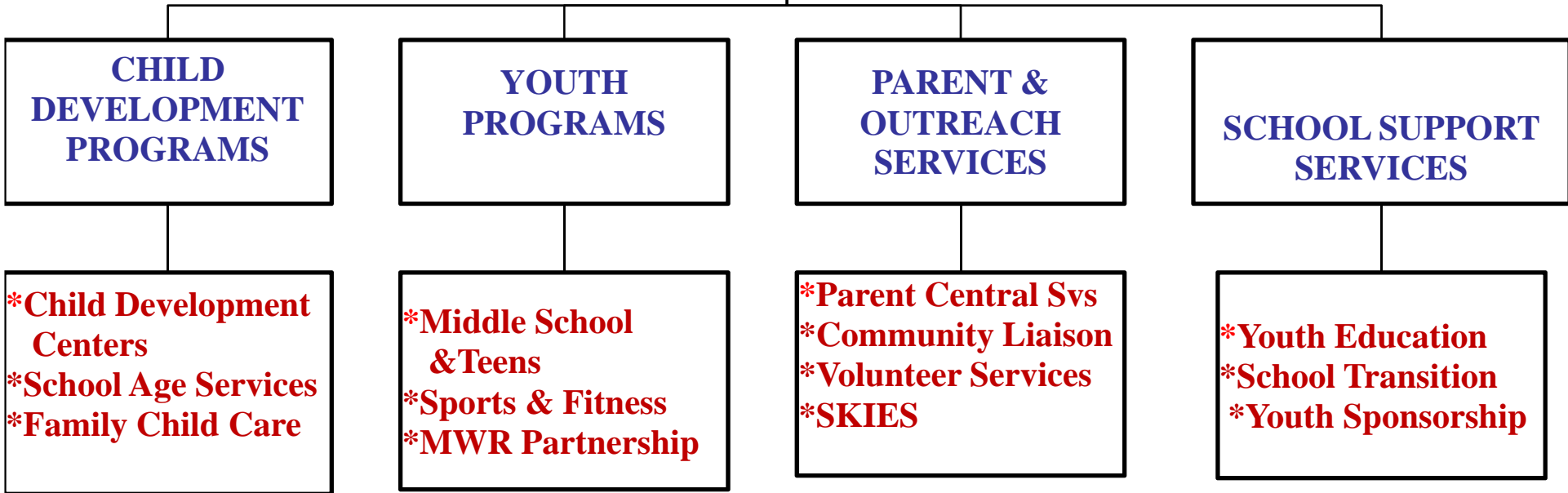
# FORT LEE CHILD, YOUTH & SCHOOL SERVICES



U.S. Army Child, Youth  
& School Services

## ORGANIZATIONAL STRUCTURE

**CHILD, YOUTH & SCHOOL SERVICES**





# **FORT LEE CHILD, YOUTH & SCHOOL SERVICES**



U.S. Army Child, Youth  
& School Services

## **PROGRAMS**

- **CHILD DEVELOPMENT CENTER (Yorktown): 6 wks - kindergarten**  
*Full Day: M-F 5:15 a.m.- 6:00 p.m.*  
*Kindergarten: B/A School*
- **CHILD DEVELOPMENT CENTER (Battle): 6 wks - 5 yrs**  
*Part-Day: M-F 9:00 a.m. – 3:00 p.m. (2, 3 or 5 days)*  
*Hourly: 8:00 a.m.- 5:00 p.m.*
- **SCHOOL-AGE SERVICES: 1st - 5th grades**  
*B & A School: M-F 5:15 a.m.- 9:00 a.m. & 4:00 p.m.- 6:00 p.m.*  
*Summer Camp: M-F 5:15 a.m.- 6:00 p.m.*
- **FAMILY CHILD CARE: 4 wks - 12 yrs**  
*Full Day; Part Day; B & A School; Hourly Care; Extended Hours Care*



# **FORT LEE CHILD, YOUTH & SCHOOL SERVICES**



## **PROGRAMS**



U.S. Army Child, Youth  
& School Services

- **MIDDLE SCHOOL & TEENS: 6th - 12th Grades**  
**M-F: 3:00 p.m. – 7:00 p.m. (Summer: 12:00 p.m. – 9:00 p.m.)**  
**Sat: 3:00 p.m.-9:00 p.m.**

*Affiliate of the Boys' and Girls' Clubs of America*

- **YOUTH SPORTS & FITNESS: 3 - 18 yrs**  
***Instructional Camps - Leagues -Tournaments -Health & Fitness Programs***
- **MWR PARTNERSHIP**  
***“Kids On-Site” (on-site, hourly care options in FMWRC facilities)***  
***“The EDGE! (activities conducted in FMWRC facilities)***  
***“HIRED! (Teens working in paid FMWR apprentice positions and receiving workforce education)***



# **FORT LEE CHILD, YOUTH & SCHOOL SERVICES**



## **PROGRAMS**



U.S. Army Child, Youth  
& School Services

- **PARENT & OUTREACH SERVICES**

*Mobile CYSS Programs (Volunteer Child Care in Unit Settings, Playgroups, Parent Co-ops) – Parent Central Services - Information & Resources - Baby Sitter Training; Home Alone Classes - Special Needs Accommodation Process Team - Parent Education - CYSS Web Page - Volunteer Leadership Opportunities - Special Events - CYSS Instructional Programs (Schools of Knowledge Inspiration Exploration & Skills)*

- **SCHOOL SUPPORT SERVICES (School Liaison Officer)**

*School Transition Support - Post Secondary Opportunities - Partnerships - Installation/School Communications – Youth Sponsorship -*





# Modular Child Development Center Opened 6 April, 2009



U.S. Army Child, Youth  
& School Services





# **FORT LEE CHILD, YOUTH & SCHOOL SERVICES**



## **CHILD CARE SPACES**



U.S. Army Child, Youth  
& School Services

- **Current Capability: 467 spaces**
  - **Facility Spaces (2 Child Development Centers) = 269**
  - **Family Child Care Spaces (33 homes) = 198**
  
- **Capability (end state): 693-704 spaces**
  - **Facility Spaces (4 Child Development Centers) = 488**
  - **Family Child Care Spaces (appx. 45 homes) = 205-216**





U.S. Army Child, Youth  
& School Services

# ***FORT LEE*** ***CHILD, YOUTH & SCHOOL SERVICES***

## **CHILD CARE CONSTRUCTION PROJECTS**

- **SISISKY CDC :**

**Projected to be completed winter 2010.**

- **Multi-Program CDC:**

**Child care and instructional programs. Projected to be completed spring 2011.**



# SISISKY CDC: Winter 2010



U.S. Army Child, Youth  
& School Services





# Multi-Program CDC: Spring 2011



U.S. Army Child, Youth  
& School Services







# Army C Y S Services



## SY 2010-2011 GARRISON FEE CHART FOR:

### FORT LEE

#### CHILD DEVELOPMENT CENTERS (CDC) Monthly FEE CHART

Total Family Income Categories	Full Day	Part Time*	Part Day Pre-School			
			5 Day 6 Hr	3 Day 6 Hr	3 Day 6 Hr	
CAT 1	\$0 - 29,400	\$210	\$162	\$134	\$82	\$54
CAT 2	\$29,401 - 35,700	\$294	\$212	\$192	\$116	\$78
CAT 3	\$35,701 - 46,200	\$362	\$260	\$230	\$140	\$94
CAT 4	\$46,201 - 57,750	\$430	\$312	\$270	\$164	\$110
CAT 5	\$57,751 - 73,500	\$504	\$360	\$318	\$192	\$128
CAT 6	\$73,501 - \$85,000	\$560	\$406	\$352	\$212	\$142
CAT 7	\$85,001 - \$100,000	\$566	\$424	\$362	\$218	\$146
CAT 8	\$100,001 - \$125,000	\$572	\$434	\$366	\$220	\$148
CAT 9	\$125,001+	\$578	\$444	\$372	\$224	\$150

STANDARD HOURLY RATE: \$4.00  
(Multiple Child Reductions and Total Family Income Categories do not apply)

#### SCHOOL-AGE SERVICES (SAS) and KINDERGARTEN Monthly FEE CHART

Total Family Income Categories	Before/After School	Before/After Kindergarten	Before		SAS Camp (Weekly)
			Before	After	
CAT 1	\$0 - 29,400	\$98	\$108	\$58	\$40
CAT 2	\$29,401 - 35,700	\$148	\$162	\$94	\$52
CAT 3	\$35,701 - 46,200	\$182	\$194	\$112	\$64
CAT 4	\$46,201 - 57,750	\$218	\$228	\$130	\$77
CAT 5	\$57,751 - 73,500	\$252	\$266	\$152	\$89
CAT 6	\$73,501 - \$85,000	\$284	\$290	\$162	\$100
CAT 7	\$85,001 - \$100,000	\$290	\$300	\$166	\$105
CAT 8	\$100,001 - \$125,000	\$294	\$306	\$168	\$107
CAT 9	\$125,001+	\$298	\$310	\$170	\$110

OCCASIONAL USE RATES: Part Time (< or = to 4 hrs./day) \$16.00 Daily (> 4 hrs.): \$30.00  
(Multiple Child Reductions and Total Income Family Categories do not apply)

#### YOUTH SPORTS (YS) Season FEE CHART

Category	Sports	Season Fee
Developmental Sports	Team Sports for Ages 3 - 5	\$20
Category A	Soccer, Flag Football, Cheerleading, Basketball, Volleyball, Track & Field, Dodge Ball	\$40
Category B	Baseball, Softball, Wrestling	\$45
Category C	Tackle Football, Lacrosse, Ice Hockey, Competitive Swimming, Golf, Field Hockey	>= \$65

\* Category C Sport Fees are locally determined but must be equal to or greater than amount shown  
OTHER SPORTS NOT LISTED: Contact FMWRC Sports POC to determine appropriate Category

#### Additional Information

FINANCIAL DISCLOSURE: Patrons who do not wish to disclose financial information will be placed in Category 9 .

MULTIPLE CHILD REDUCTION: A 15% Reduction is offered to the second and subsequent children in all regularly scheduled Army Child Care Programs to include Sports.  
(Full fee is charged for the child in the most expensive care option, e.g., Full Day CDC care vs SAS care) .

LATE PICK-UP FEES: Family fee of \$1.00 per minute/\$15.00 maximum. Note: If Family has children at different sites, late pick-up fees are assessed per site.

\*PART TIME CARE: Applies to CDC (4 - 5 hr / 5 day) and Kindergarten Care (for children attending a part time [AM or PM] Kindergarten program).

All Fees effective 1 October 2010



***U.S. ARMY  
CHILD, YOUTH & SCHOOL SERVICES  
FORT LEE, VIRGINIA***



U.S. Army Child, Youth  
& School Services

***“PROVIDING THE BEST  
FOR THOSE WE SERVE”***