

2019 Transportation Socio-Economic Data

*Prepared by the Tri-Cities Area Metropolitan Planning
Organization; approved September 12, 2019 by the
Tri-Cities Area MPO Policy Committee*

Prepared by Christopher Nicholas, David Hyder, and Ron Svejkovsky

Crater Planning District Commission
Monument Professional Building
1964 Wakefield Street
P.O. Box 1808
Petersburg VA 23805
Telephone (804) 861-1666
Email rsvejkovsky@craterpdc.org

If you need help
understanding this report
or need it translated,
please call us at (804) 861-
1666

Si necesita ayuda para
entender este informe o
necesita traducirlo,
llámenos al (804) 861-
1666.

Notice of Non-Discrimination – Title VI

The Tri-Cities Metropolitan Planning Organization (MPO) complies with Title VI of the Civil Rights Act of 1964 and related statutes and regulations in all programs and activities. For more information, see

http://www.craterpdc.org/transportation/title_vi.htm

NO DISCRIMINACIÓN

La Organización Tri-Cities Area Metropolitana de Planificación (TCAMPO) Cumple totalmente con el Título VI de la Ley de Derechos Civiles de 1964 y los estatutos y los reglamentos relacionados con toda programas y actividades. El TCAMPO se esforzará para proporcionar ajustes razonables y servicios para personas que requieran asistencia especial para participar en este público oportunidad de participación. Para obtener más información sobre el cumplimiento de la accesibilidad, o para obtener una Formulario de Queja Título VI, ver http://www.craterpdc.org/transportation/title_vi.htm o llame al Título VI Coordinador en el 804-861-1666.

Introduction

Developing and adopting a metropolitan transportation plan (MTP) is a huge job. Once an MTP is adopted, staff and decision-makers often look at the document with justified pride, having spent enormous effort developing a plan focus, and move on to the next job. This is one of a proposed series of whitepapers intended to keep the MTP current, address easily understood parts of the MTP, allow partner agencies and the public more opportunities to meaningfully participate in transportation planning, and better inform decision-makers.

The whitepapers are organized similarly, and each will include a title, our contact information, a revision history, MPO context, the regulatory citation that we are working with information showing current conditions, a discussion of conditions, recommendations for improvement and cited literature.

Context

The Tri-Cities Metropolitan Planning Organization was created on March 21, 1974, by agreement between the Crater Planning District Commission and the Virginia Department of Highways. The Cities of Colonial Heights, Hopewell, Petersburg and the Counties of Chesterfield, Dinwiddie and Prince George also entered into supporting a continuing transportation planning process for the metropolitan area. On November 7, 1979, Virginia's

Secretary of Transportation designated the Tri-Cities Area Policy Committee as the Metropolitan Planning Organization for the Tri-Cities Area. **Figure 1** shows the MPO's planning area and its location in the Commonwealth of Virginia. To better understand transportation in the Tri-Cities Area you may wish to read our *Tri-Cities Area Year 2040 Transportation Plan* located at <https://www.craterpdc.org/transportation/mpo.htm>

Tri-Cities MPO Planning Area Selecting the Base and Design Years for the Socio-Economic Data

Methodology for the Base Year

For the 2012 Base Year Data Traffic Analysis Zone (TAZ) Numbers were changed in Richmond Regional TPO and Tri-Cities Area MPO to be consistent with each other. In previous years, the Richmond Regional TPO and Tri-Cities Area MPO did not have TAZs that followed each other for the Virginia Department of Transportation Traffic Analysis Model. These new TAZ Numbers were used for the 2017 Base Year Data. For 2017 Base Year Data, TAZs were assigned for all of Dinwiddie County and Prince George County, not just TAZs in the Tri-Cities Area MPO Planning Area (as was done in previous SE data exercises).

Population and Housing

The 2017 base year methodology for development housing and population data used a bottom up approach for tracking local residential development. Chesterfield County (Tri-Cities Area MPO members) was the only locality that tracked their annual growth through their Continuing, Cooperative and Comprehensive data process, also known as 3-C data. Crater Planning District Commission (CPDC) and local staff decided to use this approach for all jurisdictions in developing the population and housing data as part of the 2017-2040 Socioeconomic update.

In the previous 2040 Long-Range Transportation Plan effort, for the 2012 base year development, the CPDC attended a 3-C workshop led by Henrico, Chesterfield and Hanover to better understand how housing and population data is tracked. CPDC Staff used the Henrico method for this effort also to develop a standard model template for the rest of jurisdiction as follows:

- Record certificate of occupancies (COs) or Building Permit and demolitions by address/location and using GIS, spatially joining each CO or building permit and demolition point to the transportation analysis zone (TAZ).
- Since the 2010 Census Summary File 1 (SF1) data was completed on April 1, 2010 each jurisdiction was instructed to track their COs or building permits and demolitions from April 1 – Dec 31, 2010, and then for

each subsequent calendar year 2011 and 2017.

- Using the 2010 Census SF1 data as the starting point, all the Census blocks with total population, group quarters population, total housing units, vacant housing units, and occupied housing units were nested into each TAZ.
- COs or building permit and demolitions dating from April 1 – Dec 31, 2010 were then input-ted into 3-C model for year 2010.
- The same step above was repeated for 2017 which calculated the population and housing data through the end of 2017.
- Vacancy rates and average household sizes used the 2010 Census SF1 for years 2010 - 2017 as more accurate estimates than ACS.
- Overall locality population data were compared to the 2017 American Community Survey (ACS) and the 2017 Weldon Cooper Estimates of Population.

Base Year (2017) Automobiles

The following methodology was used to determine auto distribution by TAZ in the Region:

- The source for auto data is the Census Transportation Planning Products (CTPP) 2006-2010 5-year estimates based on ACS 2006-2010 released on October 31, 2013. The CTPP releases data in many geographic levels, TAZ (henceforth called CTPP TAZ) being one.

Note on Chesterfield County

Chesterfield County is shared between the Tri-Cities Area MPO and the Richmond Regional TPO. To improve consistency and efficiency, staff from the Richmond TPO developed the base and design year socioeconomic data for all of Chesterfield County and shared them with the Tri-Cities MPO staff. TCAMPO is including those estimates in this report for completeness.

Figure 1: Tri-Cities Area MPO Metropolitan Planning Area

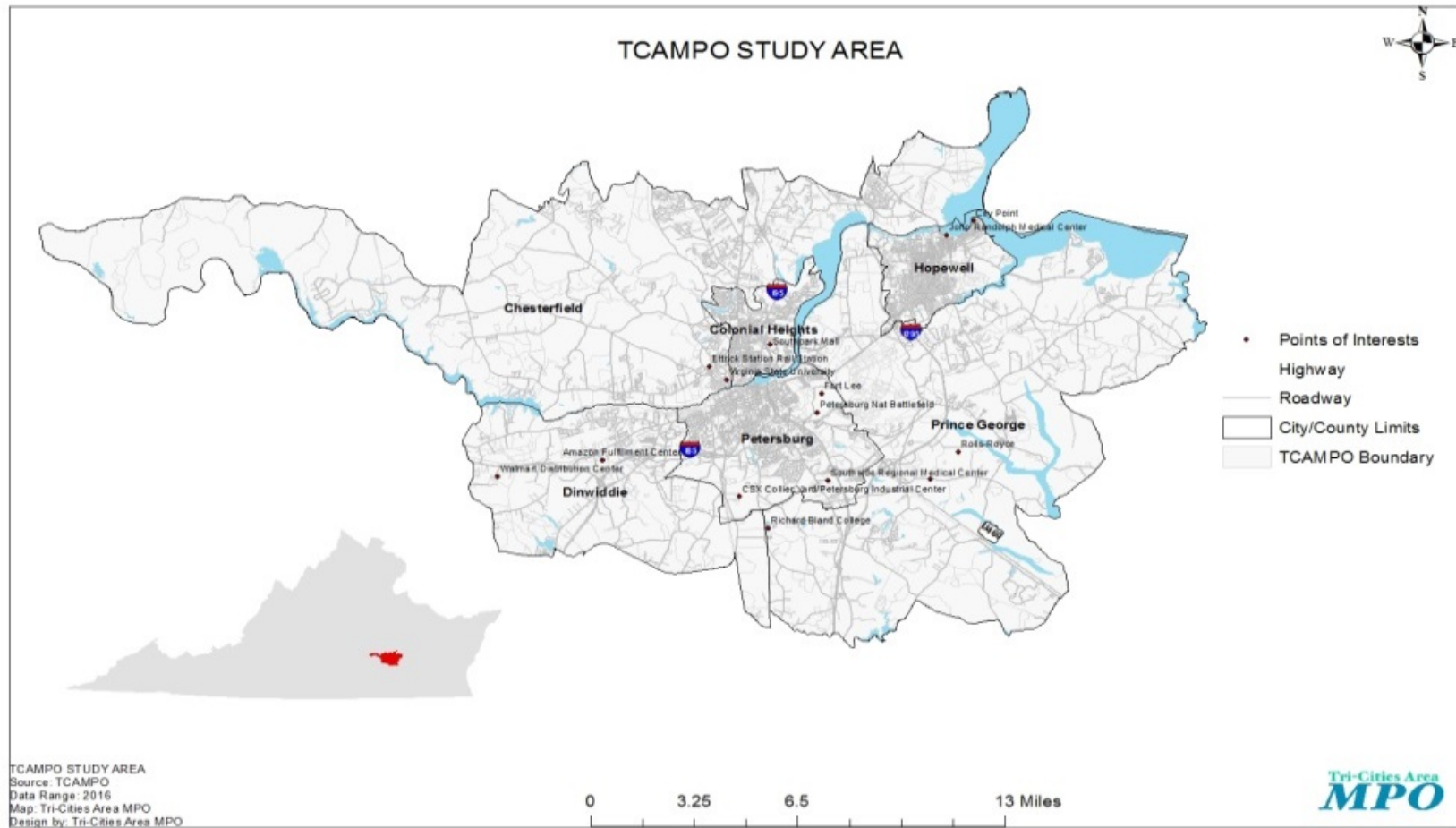


Table 1: 2017 Base Year Summary Table

Jurisdiction	Population			Housing Units	Households	Autos	School Enrollment		Employment		
	In Households	In Group Quarters	Total				K-12	College	Retail	Non-Retail	Total
Chesterfield	40,919	2,764	43,683	15,863	14,909	36,623	6,614	4,714	980	9,404	10,384
Colonial Heights	16,704	691	17,395	8,405	6,782	7,935	3,591	-	3,094	6,250	9,344
Dinwiddie	27,838	666	28,504	11,307	9,980	15,932	4,523	1,000	620	8,027	8,647
Hopewell	23,196	480	23,676	10,447	8,910	12,799	4,934	-	556	6,581	7,137
Petersburg	31,785	1,133	32,918	14,128	12,410	22,176	5,676	-	2,123	11,007	13,130
Prince George (w/o Ft. Lee)	20,954	1,069	22,023	10,285	9,593	22,113	9,044	-	833	6,812	7,645
Prince George (Ft Lee)	16,163	3,950	21,313	8,130	2,659	4,318	2,387	-	100	24,290	24,390
Grand Total	177,559	10,753	189,512	78,565	65,243	121,896	36,769	5,714	8,306	72,371	80,677

Table 2: Design Year (2045) Summary Table

Jurisdiction	Population			Housing Units	Households	Autos	School Enrollment		Employment		
	In Households	In Group Quarters	Total				K-12	College	Retail	Non-Retail	Total
Chesterfield	55,000	2,764	57,764	21,382	20,094	49,720	8,106	6,000	988	16,101	17,089
Colonial Heights	16,119	691	16,810	8,664	6,590	8,050	2,900	-	2,990	6,040	9,030
Dinwiddie	33,708	670	34,378	13,003	12,287	24,574	4,439	1,000	748	9,506	10,254
Hopewell	23,636	250	23,886	10,321	9,798	13,184	4,700	-	574	6,792	7,366
Petersburg	27,457	1,189	28,646	20,624	10,564	12,714	4,500	-	1,622	8,590	10,212
Prince George (w/o Ft. Lee)	27,294	660	27,954	15,203	13,997	25,615	6,483	-	762	12,647	13,409
Prince George (Ft Lee)	5,396	9,250	14,646	3,028	2,951	5,677	517	-	114	16,832	16,946
Grand Total	188,610	15,474	204,084	92,225	76,281	139,534	31,645	7,000	7,798	76,508	84,306

Table 3: 2017 Autos/Household

Jurisdiction	Autos	Households	Ratio
Chesterfield	36,623	14,909	2.46
Colonial Heights	8,390	7,171	1.17
Dinwiddie	15,952	9,980	1.60
Hopewell	12,799	8,910	1.43
Petersburg	22,176	12,410	1.83
Prince George	26,431	12,252	2.16
Grand Total	122,371	65,632	1.86

TAZ Framework:

The TAZ framework used for the socioeconomic data report (henceforth called Model TAZs) nests to form CTPP TAZs.

- There are 280 CTPP TAZs and 388 Model TAZs in the Tri-Cities Region.
- 200 of CTPP TAZ retain the same geographic footprint as the model TAZs. These TAZs are referred to “Non- Split Model TAZs”.

The remaining 80 CTPP TAZs have been split into 180 Model TAZs. These TAZs are “Split Model TAZs”. The methodology for automobile calculation for Split and Non-Split Model

TAZs differs and are described below:

- For Non-Split Model TAZs
Two tables were used from CTPP 2006-2010, Table B111103 (Aggregate Number of Vehicles Available in Households) and Table A112100 (Total households). Since the Non-Split Model TAZs retain same geographic structure as CTPP TAZs the data from the above two tables, Total Autos and Total Households were used directly. Autos per Household ratio for each Non -Split Model TAZ were then derived.
- For Split TAZs
 - Total Household for each- Split Model TAZ for Decennial Census 2010 was calculated using the Census block data.
 - The total household was then aggregated to CTPP TAZ.
 - A ratio of total households for the CTPP TAZ and the total households of nested Split Model TAZ was calculated to arrive at the distribution of households in each Split Model TAZ.
 - Two tables from CTPP 2006-2010, Table B111103 (Aggregate Number of Vehicles Available in Households) and Table A112100 (Total households) downloaded previously were then multiplied by the ratio determined in the previous step to calculate

total autos and total households for split Model TAZs.

- o The total autos were then divided by total household to get the autos per household ratio.

To arrive at 2017 automobiles per TAZ the ratio from the previous step was multiplied by the 2017 households provided by jurisdictional 3-C data.

School Enrollment

K-12 school enrollment was compiled using the fall of 2017-2018 academic enrollment numbers provided by Virginia's Department of Education (DOE). K-12 private school enrollment was compiled by calling/email private school administrators to get enrollment totals for 2017-2018 school year. University and college enrollment were compiled through phone calls to each institution, using the fall enrollment of the 2017-2018 academic year. These enrollment numbers include both full-time and part-time students. These institutions include 4-year universities, 2-year colleges, post-graduate programs, certificate programs, technical schools, and proprietary colleges and universities (for-profit institutions of higher learning).

Employment

The TCAMPO staff used the 2nd quarter 2017 VEC data as the main source to conduct the employment process of the 2017 SE Base Year Data. The 2017 VEC data was

provided with latitude and longitude coordinate systems for most of the employer addresses, allowing staff to plot all of the points rather than geocoding over 12,000 employer addresses. 99.9% of the 2017 VEC employment was either plotted or successfully geocoded. Employer addresses without latitude and longitude coordinates were geocoded after their addresses were verified.

With a point layer for the 2017 employment, a thorough spot-checking process was performed; staff compared it against the 2008 employment using the new TAZ geography. Any major differences were reality-checked. Some differences reflected employers relocating or going out of business. Other addresses were geocoded on the wrong side of the street or employment needed to be disaggregated into several locations.

The 2008 base year employment made use of the VEC data and verified through contact with employers of 50 or more and disaggregated employment where it was necessary. The extensive verification of the 2008 base year employment data to verify the 2017 VEC data using the 2008-point file. It is recognized that even though different economic conditions existed between 2008 - 2017, a base year comparison was helpful at the TAZ level.

Fort Lee Military Employment was compiled by calling/email (2017 Fort Lee Fast Facts Data Sheet) the Tri-

Cities Area MPO Technical Committee Member representative for Fort Lee and compiling employment data for TAZs that Fort Lee is within. Virginia Employment Commission (VEC) does not collect/record employment in the Fort Lee TAZs.

Forecasting the Future Year

To maintain consistency with the Richmond Regional TPO and the shared regional travel demand model the MPO forecasted population and employment by TAZ to 2045.

TCAMPO staff used a top down approach to estimate 2045 population and employment. The 2045 Weldon Cooper Center projections were used as population control totals for each jurisdiction. In turn the employment control totals for each jurisdiction were set by multiplying the 2017 ratio of jobs per person by to population control total for 2045 to establish the control total jobs for each jurisdiction.

The MPO staff used the Weldon Cooper Center's 2045 population estimates (developed in 2017) as the control totals for the jurisdictions in the MPO.

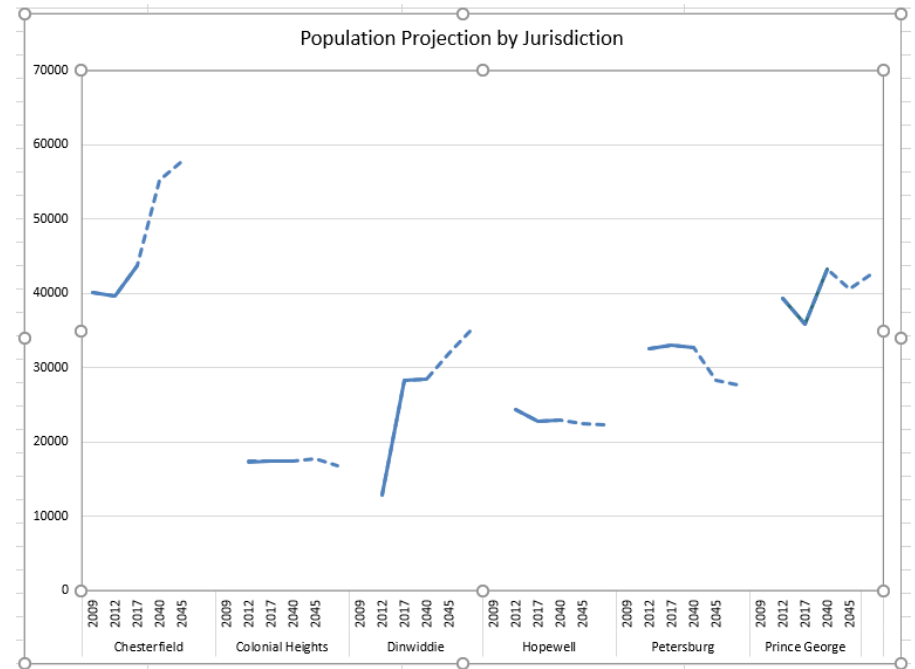


Figure 2: Population Change in the Tri-Cities Region

Projecting Population

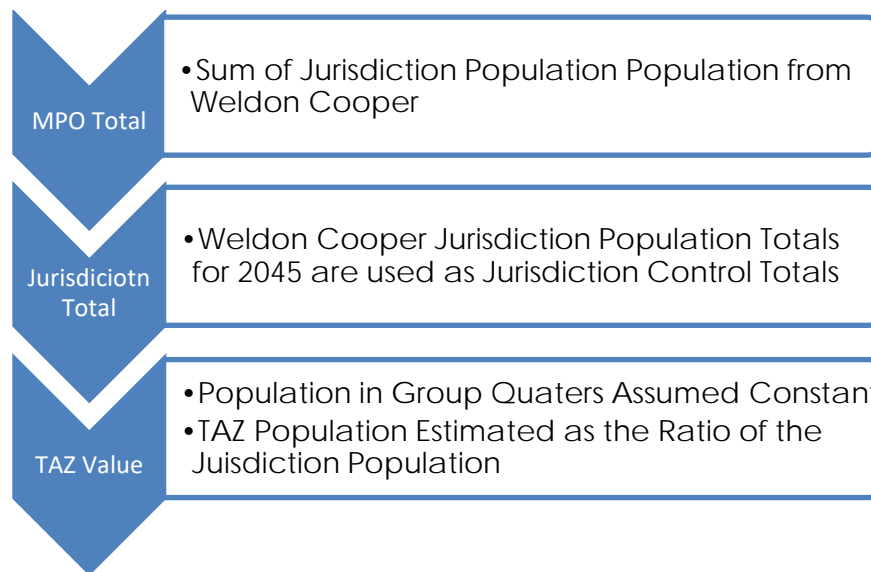


Figure 3: Assigning Design Year Population To TAZ

Population in Group Quarters

The population in group quarters is assumed to remain constant during the forecast period. This means that the number of persons in group quarters and their location remain the same throughout the projection period.

The population in households for 2045 for each TAZ is calculated using the formula below.

Population in Households

The population in households, for each jurisdiction, was developed by subtracting the number of persons in group quarters from the Weldon Cooper Center control total for each jurisdiction using the formula below.

$$PTaz45_i = PJur45 \times \frac{PTaz17_i}{PJur17}$$

Persons per Household

This was computed by dividing the number of persons by the number of households

Projecting Automobiles

Automobile estimates for 2045 use the same proportion of autos to population as in 2017

Table 4: Autos/Household Trend

Jurisdiction	Historic		Projected		
	2009	2012	2017	2040	2045
Chesterfield	2.18	2.09	1.82	1.22	2.40
Colonial Heights	1.07	1.88	1.17	1.43	1.40
Dinwiddie	1.43	2.22	1.61	2.04	2.00
Hopewell	1.45	1.87	1.43	1.34	1.34
Petersburg	3.24	1.70	1.30	1.17	1.17
Prince George	1.62	2.06	1.69	1.83	1.83

Projecting Students

Table 5: Estimated Student Enrollment by Jurisdiction

Jurisdiction	Students/ Household Population (2017)	Household Population (2045)	K-12 Enrollment (2045)
Chesterfield (pt.)	0.11	55,000	8,106
Colonial Heights	0.20	16,119	2,900
Dinwiddie	0.15	33,708	4,439
Hopewell	0.20	23,444	4,700
Petersburg	0.19	27,751	4,500
Prince George	0.38	42,600	7,000
Total			31,645

College enrollment:

John Tyler Community College (JTCC), Virginia State University (VSU), and several proprietary colleges are located in Chesterfield County. JTCC’s total enrollment (both campuses in Chesterfield) was extrapolated to 2040 based on historical enrollment numbers. Once the total enrollment was projected enrollment based on campus location was allocated based on the 2017 enrollment distribution. VSU enrollment was also extrapolated to 2040 based on historical enrollment numbers. The proprietary colleges were assumed to remain constant.

Table 6: College Enrollment

	2,017	2,045
Chesterfield	4,714	7,000
Colonial Heights	-	-
Dinwiddie	1,000	1,000
Hopewell	-	-
Petersburg	-	-
Prince George	-	-
Total	5,714	8,000

Projecting Employment

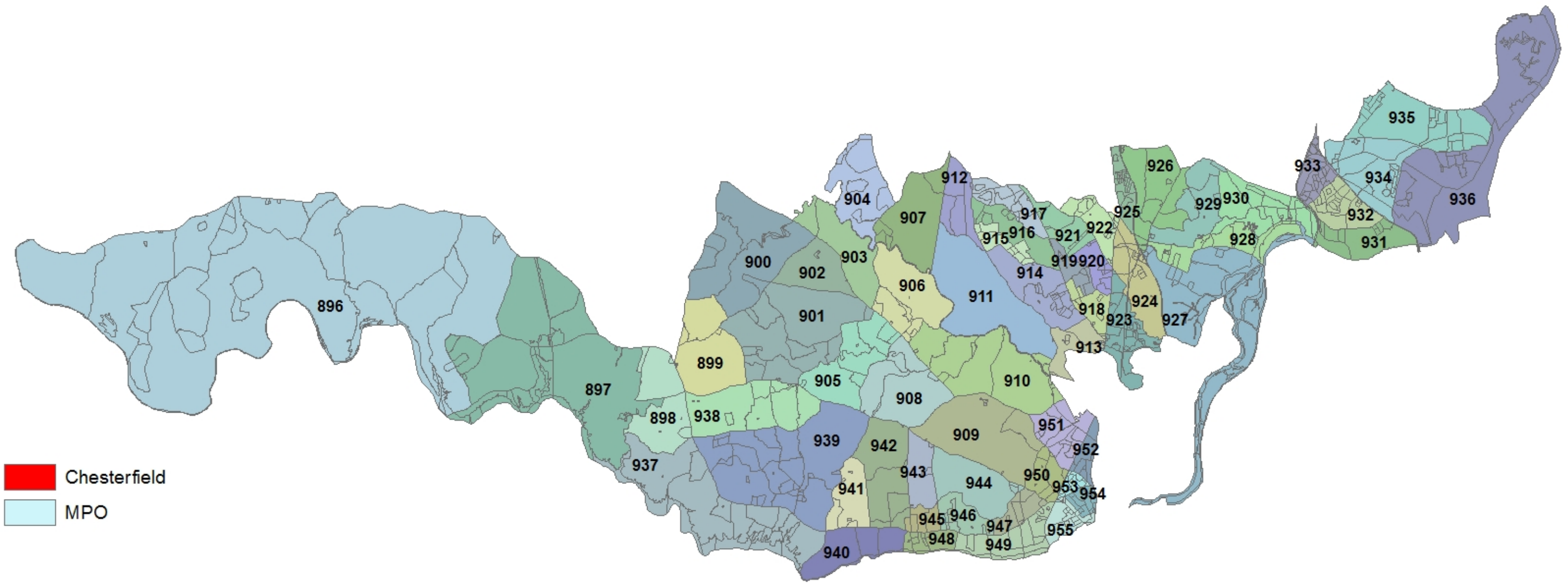
An employment control total of 181,391 was established by Chmura Economics and Analytics and accepted by Chesterfield County staff. To reach this employment the County would increase by an additional 64,957 jobs from its 2017 base year employment. The County provided new retail, office, and industrial development (square footage) by TAZ by year ranges (2010-2014, 2015-2020, 2020-2025, and 2025-2040). Revisions by RRPDC staff added employment in James River Industrial Park and Meadowville Technology Park based on recent announcements and additional capacity. This resulted in an additional employment of 53,809 being allocated to 55 TAZs. The remaining employment of 11,148 (needed to reach the control total) was distributed proportionally to all remaining 187 TAZs not previously allocated to account for natural employment growth based on the 2017 employment distribution.

Socioeconomic Data Tables (2017 and 2045)

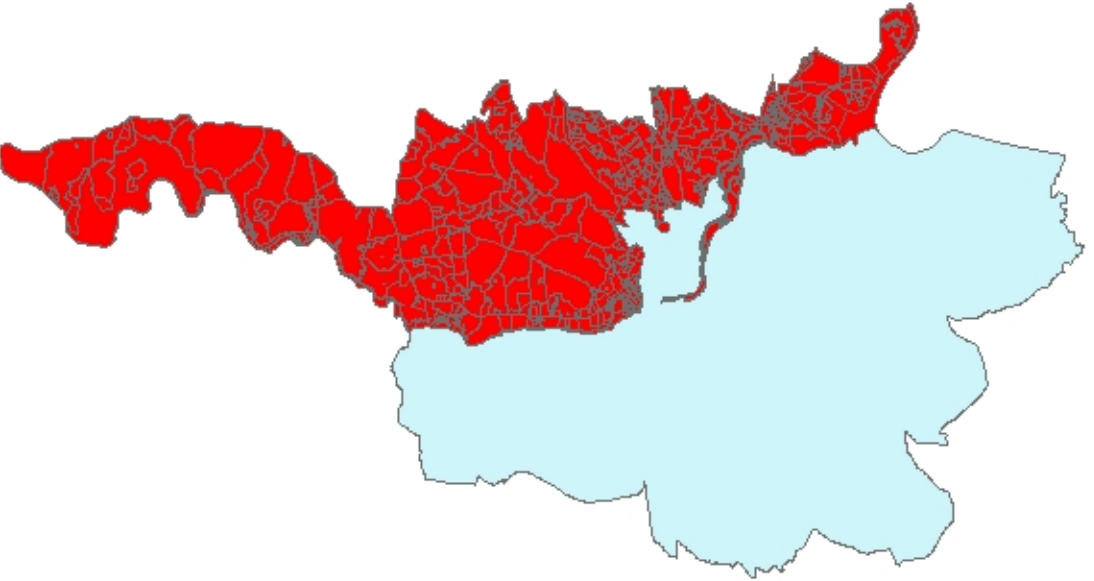
The following pages include the Socioeconomic Data Maps and Tables for each jurisdiction by TAZ. The format used is similar to what is used by RRTPO for their SE Data Report.

Chesterfield

N



 Chesterfield
 MPO



Source: Tri Cities Area Metropolitan Planning Organization, 2013



Chesterfield County

TAZ	Population						Housing				Automobiles	School Enrollment				Employment						
	Total		In Occupied Housing Units		In Group Quarters		Housing Units		Households			Grade K-12		Colleges		Total		Retail		Non-Retail		
	2017	2045	2017	2045	2017	2045	2017	2045	2017	2045		2017	2045	2017	2045	2017	2045	2017	2045	2017	2045	
892	756	859	756	859	0	0	307	349	288	327	672	763	0	0	0	0	4,223	4,235	462	462	3,761	3,773
893	6	7	6	7	0	0	4	5	4	5	9	11	0	0	3,735	3,735	960	960	534	534	426	426
894	209	246	209	246	0	0	72	85	68	80	194	228	0	0	0	0	1,850	1,941	240	240	1,610	1,701
895	3,128	4,021	3,128	4,021	0	0	1,070	1,375	1,005	1,292	2,978	3,828	2,305	2,753	0	0	914	929	240	240	674	689
896	747	1,034	747	1,034	0	0	261	361	245	339	805	1,114	0	0	0	0	65	65	8	8	57	57
897	1,591	2,599	1,591	2,599	0	0	538	879	506	827	1,608	2,628	0	0	0	0	129	129	14	14	115	115
898	513	605	513	605	0	0	211	249	198	234	613	724	0	0	0	0	*	1	*	0	*	1
899	252	521	252	521	0	0	105	217	99	205	255	528	0	0	0	0	*	5	*	0	*	5
900	95	1,356	95	1,356	0	0	42	599	39	557	105	1,500	0	0	0	0	18	18	0	0	18	18
901	254	300	254	300	0	0	109	129	102	120	285	335	0	0	0	0	27	27	1	1	26	26
902	168	198	168	198	0	0	70	83	66	78	191	226	0	0	0	0	0	0	0	0	0	0
903	436	679	436	679	0	0	168	262	158	246	469	730	0	0	0	0	19	19	0	0	19	19
904	741	874	741	874	0	0	274	323	257	303	870	1,026	0	0	0	0	6	7	1	1	5	6
905	259	305	256	302	3	3	106	125	100	118	307	362	0	0	0	0	*	6	*	0	*	6
906	192	253	192	253	0	0	90	119	85	112	184	242	0	0	0	0	*	5	*	0	*	5
907	729	924	729	924	0	0	303	384	285	361	881	1,116	0	0	0	0	36	36	0	0	36	36
908	173	204	173	204	0	0	73	86	69	81	191	224	0	0	0	0	*	2	*	0	*	2
909	331	1,776	331	1,776	0	0	129	692	121	649	276	1,480	0	0	0	0	0	0	0	0	0	0
910	618	752	618	752	0	0	254	309	239	291	675	822	1,707	2,039	0	0	*	267	*	13	*	254
911	79	251	79	251	0	0	35	111	33	105	119	379	0	0	0	0	*	2	*	0	*	2
912	46	54	46	54	0	0	19	22	18	21	60	70	0	0	0	0	0	0	0	0	0	0
913	415	489	415	489	0	0	169	199	159	187	233	274	0	0	0	0	*	12	*	1	*	11
914	1,810	2,139	1,806	2,135	4	4	699	826	657	777	1,561	1,846	1,053	1,258	0	0	178	178	0	0	178	178
915	830	985	830	985	0	0	305	362	287	341	897	1,066	0	0	0	0	5	5	0	0	5	5
916	1,726	2,145	1,726	2,145	0	0	600	746	564	701	1,704	2,118	0	0	0	0	75	75	3	3	72	72
917	1,644	1,993	1,644	1,993	0	0	610	739	573	695	1,639	1,988	0	0	0	0	*	6	*	0	*	6
918	971	1,145	971	1,145	0	0	379	447	356	420	819	966	206	452	0	0	19	19	3	3	16	16
919	1,356	1,612	1,356	1,612	0	0	459	546	431	512	838	995	597	713	0	0	*	109	*	0	*	109
920	795	1,004	790	999	5	5	299	378	281	355	678	857	0	0	0	0	27	27	7	7	20	20
921	1,493	1,508	1,493	1,508	0	0	554	560	521	526	1,456	1,470	0	0	0	0	33	33	0	0	33	33

* - Employment was redacted due to Virginia Employment Commission (VEC) confidentiality agreement, where an employer made up at least 80% of employment OR there was 3 employers or less.

Chesterfield County

TAZ	Population						Housing				Automobiles	School Enrollment				Employment						
	Total		In Occupied Housing Units		In Group Quarters		Housing Units		Households			Grade K-12		Colleges		Total		Retail		Non-Retail		
	2017	2045	2017	2045	2017	2045	2017	2045	2017	2045		2017	2045	2017	2045	2017	2045	2017	2045	2017	2045	
922	1,402	2,560	1,402	2,560	0	0	531	970	499	911	783	1,429	0	0	0	0	122	124	78	78	44	46
923	480	566	480	566	0	0	224	264	210	248	355	419	0	0	0	0	774	834	98	98	676	736
924	10	151	10	151	0	0	6	91	6	91	16	243	0	0	0	0	559	729	70	70	489	659
925	1,485	1,751	1,485	1,751	0	0	533	628	501	591	1,181	1,393	0	0	0	0	323	345	0	0	323	345
926	868	1,024	868	1,024	0	0	301	355	283	334	825	974	560	669	0	0	*	404	*	3	*	401
927	4	5	4	5	0	0	2	3	2	3	7	11	0	0	0	0	3,191	3,782	141	141	3,050	3,641
928	23	27	23	27	0	0	8	9	8	9	29	33	0	0	0	0	695	948	217	225	478	723
929	1,618	1,908	1,618	1,908	0	0	562	663	528	623	1,566	1,848	0	0	0	0	44	44	1	1	43	43
930	1,002	1,226	1,002	1,226	0	0	339	415	319	390	940	1,149	0	0	0	0	9	10	0	0	9	10
931	332	391	332	391	0	0	138	163	130	153	316	372	0	0	0	0	11	11	0	0	11	11
932	1,571	1,852	1,571	1,852	0	0	675	796	634	747	1,436	1,692	516	616	0	0	137	137	24	24	113	113
933	2,206	2,744	2,206	2,744	0	0	949	1,180	892	1,110	1,457	1,813	0	0	0	0	*	152	*	0	*	152
934	219	558	219	558	0	0	88	224	83	211	233	592	0	0	0	0	94	493	36	36	58	457
935	69	81	69	81	0	0	28	33	26	31	78	93	0	0	0	0	919	4,430	5	5	914	4,425
936	22	26	22	26	0	0	10	12	9	11	16	20	0	0	0	0	13	1,615	0	0	13	1,615
937	812	1,689	812	1,689	0	0	302	628	284	591	880	1,831	0	0	0	0	56	56	0	0	56	56
938	510	796	510	796	0	0	195	304	183	286	532	831	0	0	0	0	4	4	1	1	3	3
939	959	1,131	959	1,131	0	0	375	442	352	415	961	1,133	0	0	0	0	*	4	*	0	*	4
940	153	180	153	180	0	0	69	81	65	76	175	205	0	0	0	0	0	0	0	0	0	0
941	389	459	389	459	0	0	157	185	148	175	423	500	0	0	0	0	0	0	0	0	0	0
942	259	305	259	305	0	0	116	137	109	128	268	315	0	0	0	0	*	6	*	0	*	6
943	326	384	326	384	0	0	123	145	116	137	307	363	970	1,159	0	0	*	188	*	0	*	188
944	729	859	723	853	6	6	277	327	260	307	595	703	0	0	0	0	*	6	*	0	*	6
945	329	388	329	388	0	0	134	158	126	149	280	331	0	0	0	0	16	18	0	0	16	18
946	923	1,233	923	1,233	0	0	359	480	337	450	814	1,087	0	0	0	0	*	2	*	0	*	2
947	703	916	703	916	0	0	276	360	259	337	601	782	0	0	0	0	*	48	*	0	*	48
948	327	386	327	386	0	0	144	170	135	159	261	307	421	503	0	0	114	114	13	13	101	101
949	803	947	803	947	0	0	356	420	335	395	615	725	0	0	0	0	6	6	0	0	6	6
950	824	883	332	391	492	492	141	166	132	155	321	377	0	0	0	0	161	161	135	135	26	26
951	1,920	2,272	1,920	2,272	0	0	785	929	738	873	1,701	2,012	0	0	0	0	10	10	0	0	10	10

* - Employment was redacted due to Virginia Employment Commission (VEC) confidentiality agreement, where an employer made up at least 80% of employment OR there was 3 employers or less.

Chesterfield County

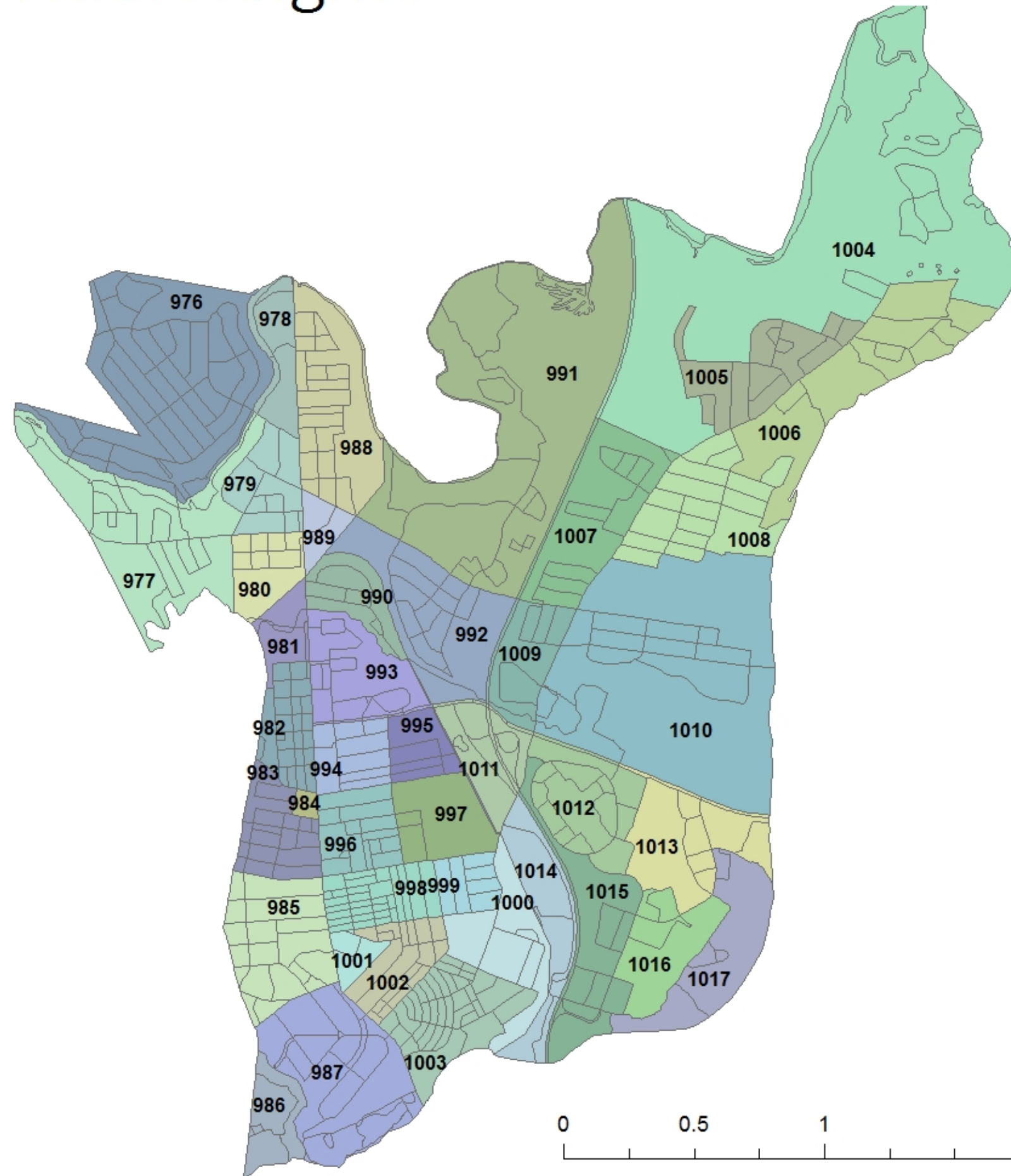
TAZ	Population						Housing				Automobiles	School Enrollment				Employment						
	Total		In Occupied Housing Units		In Group Quarters		Housing Units		Households			Grade K-12		Colleges		Total		Retail		Non-Retail		
	2017	2045	2017	2045	2017	2045	2017	2045	2017	2045		2017	2045	2017	2045	2017	2045	2017	2045	2017	2045	
952	275	341	275	341	0	0	120	149	113	140	194	240	0	0	0	0	*	1	*	0	*	1
953	597	603	594	600	3	3	246	248	231	233	333	336	0	0	0	0	*	12	*	11	*	1
954	2,358	2,360	211	213	2,147	2,147	99	100	93	94	12	12	0	0	4,713	4,713	*	863	*	0	*	863
955	912	1,057	808	953	104	104	334	394	314	370	393	463	584	697	0	0	476	479	96	96	380	383
Total	340,848	437,512	336,197	432,861	4,651	4,651	132,586	169,660	124,595	159,420	293,337	375,168	62,779	77,677	20,985	20,985	131,120	177,742	34,646	43,522	96,474	134,220

* - Employment was redacted due to Virginia Employment Commission (VEC) confidentiality agreement, where an employer made up at least 80% of employment OR there was 3 employers or less.



Note: totals are for the entire County, in RRTPO and Tri-Cities MPO areas

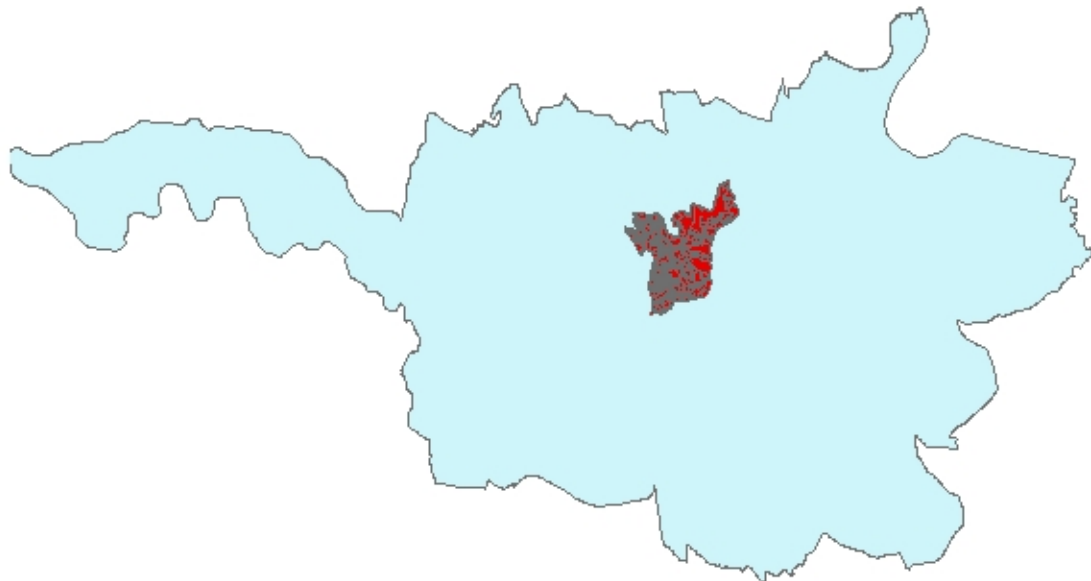
Colonial Heights

N



MPO_1

-  Colonial Heights
-  MPO



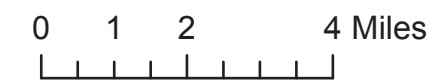
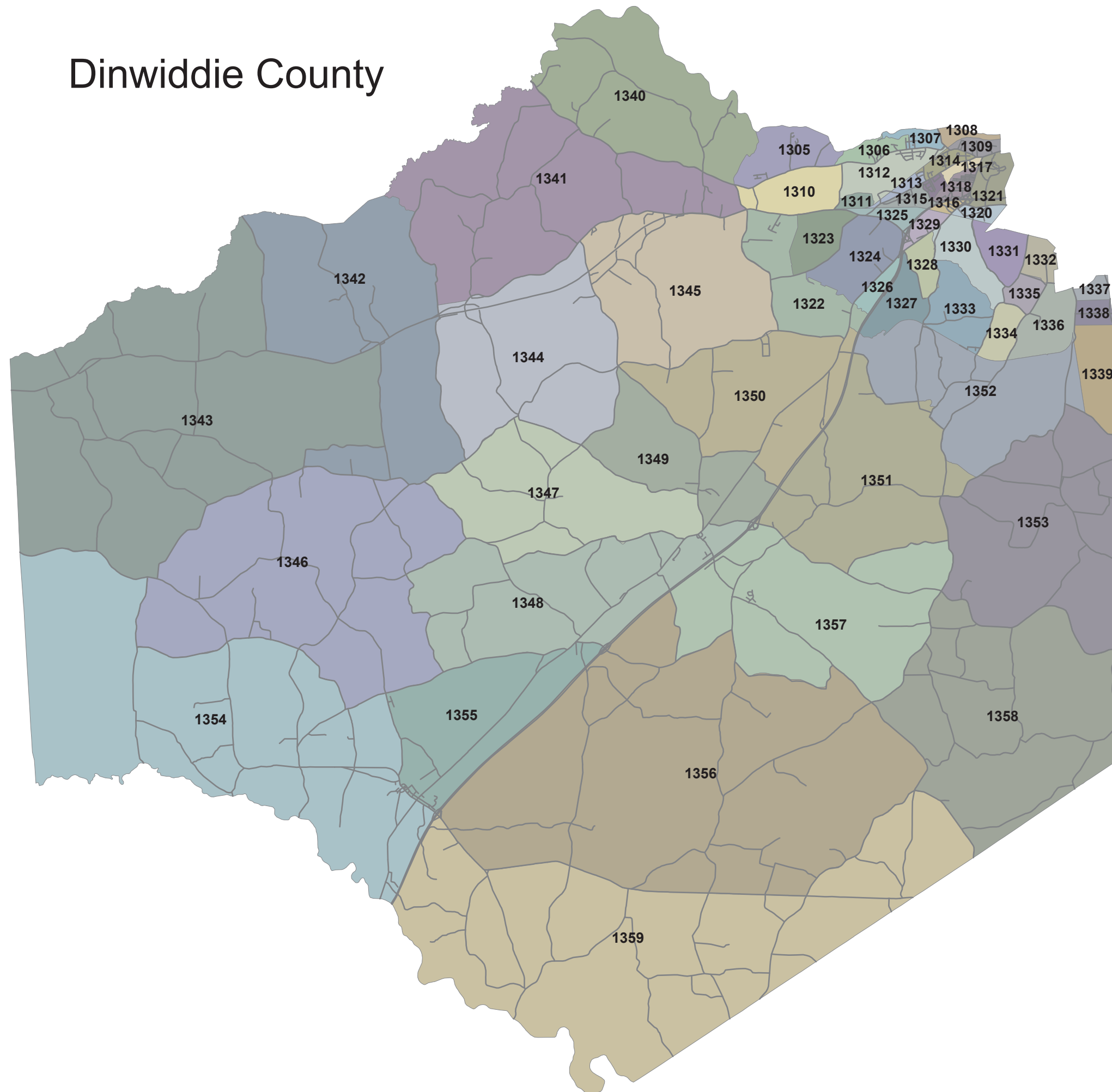
Source: Tri Cities Area Metropolitan Planning Organization, 2013



Colonial Heights

TAZ	FT Lee TAZ	Population						Households	Automobiles	School Enrollment				Employment							
		Total		In Occupied Housing Units		In Group Quarters				Grade K-12		Colleges		Total		Retail		Non-Retail			
		2017	2045	2017	2045	2017	2045			2017	2045	2017	2045	2017	2045	2017	2045	2017	2045		
976	No	1,330	1,275	1330	1,275	0	0	546	533	639	746	584	540	0	0	11	11	2	2	9	9
977	No	1,090	1,053	1090	1,053	0	0	461	522	539	731	0	0	0	0	19	18	19	18	0	0
978	No	189	183	189	183	0	0	64	60	75	84	0	0	0	0	207	200	11	11	196	189
979	No	90	87	90	87	0	0	36	35	42	49	0	0	0	0	101	98	99	96	2	2
980	No	156	151	156	151	0	0	61	56	71	78	370	263	0	0	59	57	6	6	53	51
981	No	523	505	523	505	0	0	208	240	243	336	0	0	0	0	8	8	8	8	0	0
982	No	89	86	89	86	0	0	27	30	32	42	0	0	0	0	136	131	50	48	86	83
983	No	735	710	735	710	0	0	280	250	328	293	0	0	0	0	49	48	35	34	14	14
984	No	0	0	0	0	0	0	0	0	0	0	0	0	0	0	52	50	0	0	52	50
985	No	778	752	778	752	0	0	294	308	344	360	0	0	0	0	151	146	80	77	71	69
987	No	353	341	353	341	0	0	124	128	145	150	0	0	0	0	640	618	0	0	640	618
988	No	857	828	857	828	0	0	367	330	429	386	322	236	0	0	703	679	3	3	700	676
989	No	0	0	0	0	0	0	0	0	0	0	0	0	0	0	332	321	28	27	304	294
990	No	990	962	851	823	139	139	376	350	440	410	0	0	0	0	8	8	0	0	8	8
991	No	405	391	405	391	0	0	109	243	128	284	0	0	0	0	293	283	76	73	217	210
992	No	294	285	234	226	59	59	97	90	113	105	0	0	0	0	228	221	7	7	221	214
993	No	326	315	326	315	0	0	118	112	138	131	0	0	0	0	192	186	6	6	186	180
994	No	217	210	217	210	0	0	105	85	123	99	0	0	0	0	179	173	0	0	179	173
995	No	185	178	185	178	0	0	263	72	308	84	0	0	0	0	2	2	0	0	2	2
996	No	605	584	603	582	2	2	265	249	310	291	0	0	0	0	455	440	0	0	455	440
997	No	347	336	347	336	0	0	125	119	146	139	0	0	0	0	0	0	0	0	0	0
998	No	1,195	1,171	704	680	491	491	274	274	321	321	0	0	0	0	32	31	0	0	32	31
999	No	149	144	149	144	0	0	54	59	63	69	0	0	0	0	0	0	0	0	0	0
1000	No	833	805	833	805	0	0	360	340	421	398	0	0	0	0	2	2	0	0	2	2
1001	No	98	95	98	95	0	0	28	38	33	44	663	537	0	0	40	39	32	31	8	8
1002	No	715	691	715	691	0	0	286	265	335	310	0	0	0	0	27	26	0	0	27	26
1003	No	235	227	235	227	0	0	96	93	112	109	0	0	0	0	26	25	0	0	26	25
1004	No	929	898	929	898	0	0	346	366	405	428	0	0	0	0	16	15	0	0	16	15
1005	No	857	828	857	828	0	0	302	339	353	397	0	0	0	0	1	1	1	1	0	0
1006	No	470	454	470	454	0	0	165	154	193	180	582	454	0	0	0	0	0	0	0	0
1007	No	740	715	740	715	0	0	260	235	304	275	870	714	0	0	1	1	0	0	1	1
1008	No	506	489	506	489	0	0	177	175	207	205	200	156	0	0	0	0	0	0	0	0
1009	No	143	138	143	138	0	0	56	55	66	64	0	0	0	0	305	294	195	188	110	106
1010	No	924	881	924	881	0	0	436	370	510	433	0	0	0	0	373	360	373	360	0	0
1011	No	15	15	15	15	0	0	4	5	5	6	0	0	0	0	43	42	5	5	38	37
1012	No	0	0	0	0	0	0	0	0	0	0	0	0	0	0	1,657	1,601	439	424	1,218	1,177
1013	No	0	0	0	0	0	0	0	0	0	0	0	0	0	0	752	726	439	424	313	302
1014	No	27	26	27	26	0	0	12	10	14	12	0	0	0	0	148	143	52	50	96	93
1015	No	0	0	0	0	0	0	0	0	0	0	0	0	0	0	1,171	1,131	439	424	732	707
1016	No	0	0	0	0	0	0	0	0	0	0	0	0	0	0	675	652	439	424	236	228
1017	No	0	0	0	0	0	0	0	0	0	0	0	0	0	0	250	242	250	242	0	0
		17,395	16,810	16,704	16,119	691	691	6,782	6,590	7,935	8,050	3,591	2,900	0	0	9,344	9,029	3,094	2,990	6,250	6,040

Dinwiddie County

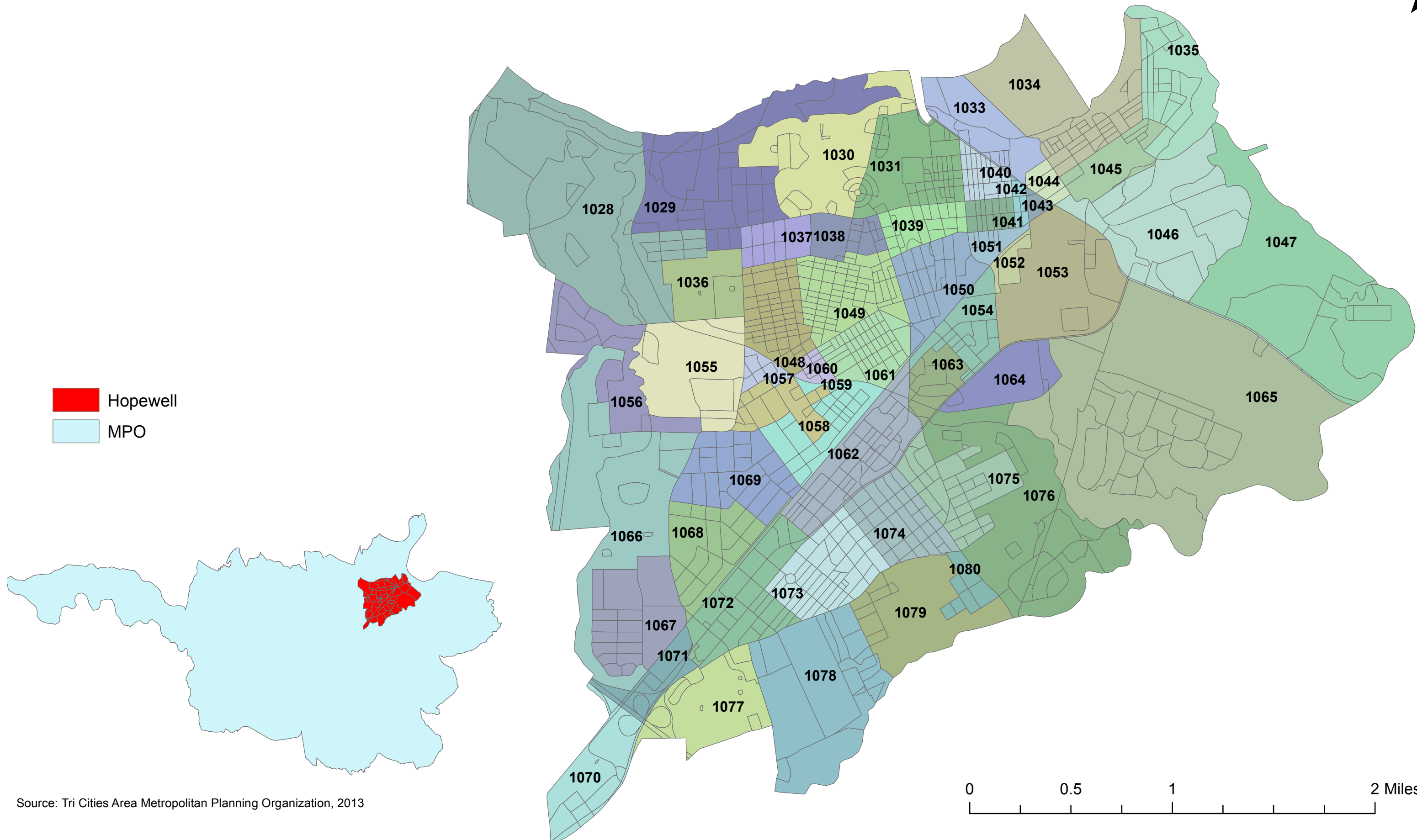


Dinwiddie

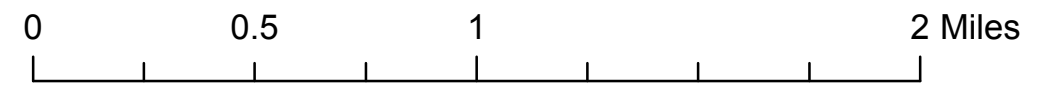
TAZ	FT Lee TAZ	Population						Households	Automobiles	School Enrollment				Employment							
		Total		In Occupied Housing Units		In Group Quarters				Grade K-12		Colleges		Total		Retail		Non-Retail			
		2017	2045	2017	2045	2017	2045			2017	2045	2017	2045	2017	2045	2017	2045	2017	2045		
1305	No	803	1,304	803	1,304	0	0	256	596	297	1,192	0	0	0	0	62	75	0	0	62	75
1306	No	155	300	155	300	0	0	46	100	53	200	84	0	0	0	10	12	0	0	10	12
1307	No	1,979	379	1,979	379	0	0	617	667	993	1,334	0	0	0	0	1	1	0	0	1	1
1308	No	83	312	83	312	0	0	33	111	53	222	0	0	0	0	18	22	0	0	18	22
1309	No	996	368	341	368	0	0	136	91	219	182	0	0	0	0	882	1,064	58	70	824	994
1310	No	330	400	330	400	0	0	119	133	192	266	0	0	0	0	488	589	0	0	488	589
1311	No	70	70	70	70	0	0	30	30	48	60	0	0	0	0	3	4	0	0	3	4
1312	No	494	500	494	500	0	0	151	177	243	354	0	0	0	0	205	247	0	0	205	247
1313	No	265	588	265	588	0	0	113	196	182	392	0	0	0	0	89	107	0	0	89	107
1314	No	1,076	1,076	1,076	1,076	0	0	320	320	515	640	0	0	0	0	10	12	10	12	0	0
1315	No	468	1,000	468	1,000	0	0	165	333	266	666	0	0	0	0	5	6	1	1	4	5
1316	No	375	991	375	991	0	0	143	356	230	712	0	0	0	0	0	0	0	0	0	0
1317	No	327	457	327	457	0	0	109	131	175	262	0	0	0	0	217	261	80	96	137	165
1318	No	890	950	890	950	0	0	291	316	469	632	0	0	0	0	80	96	16	19	64	77
1319	No	267	368	267	368	0	0	108	110	174	220	0	0	0	0	76	91	11	13	65	78
1320	No	320	320	320	320	0	0	124	124	200	248	0	0	0	0	69	83	1	1	68	82
1321	No	389	1,089	389	434	655	655	110	184	177	368	0	0	0	0	1,294	1,561	0	0	1,294	1,561
1322	No	1,339	1,500	1,339	1,500	0	0	458	500	737	1,000	528	528	0	0	76	91	21	25	55	66
1323	No	256	39	256	39	0	0	106	13	171	26	0	0	0	0	857	859	0	0	857	859
1324	No	93	111	93	111	0	0	31	31	50	62	0	0	0	0	253	305	107	129	146	176
1325	No	22	22	22	22	0	0	12	12	19	24	0	0	0	0	1,031	1,243	6	7	1,025	1,236
1326	No	0	167	0	167	0	0	0	58	0	116	0	0	0	0	10	12	0	0	10	12
1327	No	136	140	136	140	0	0	43	47	69	94	0	0	0	0	0	0	0	0	0	0
1328	No	148	167	148	167	0	0	57	39	92	78	0	0	0	0	150	181	5	6	145	175
1329	No	231	231	231	231	0	0	85	85	137	170	0	0	0	0	47	57	34	41	13	16
1330	No	90	100	90	100	0	0	31	37	50	74	0	0	0	0	51	62	0	0	51	62
1331	No	129	129	129	129	0	0	51	51	82	102	0	0	0	0	470	567	0	0	470	567
1332	No	113	72	113	72	0	0	41	25	66	50	0	0	0	0	0	0	0	0	0	0
1333	No	669	705	666	700	3	5	212	233	341	466	0	0	0	0	2	2	0	0	2	2
1334	No	67	873	67	873	0	0	24	174	39	348	0	0	0	0	9	11	0	0	9	11
1335	No	221	642	218	637	3	5	82	212	132	424	0	0	0	0	1	1	0	0	1	1
1336	No	300	379	300	379	0	0	105	100	169	200	0	0	0	0	8	10	0	0	8	10
1337	No	26	328	21	323	5	5	8	117	13	234	0	0	0	0	0	0	0	0	0	0
1338	No	12	624	12	624	0	0	4	223	6	446	0	0	1,000	1,000	206	248	1	1	205	247
1339	No	333	360	333	360	0	0	119	120	192	240	0	0	0	0	3	3	2	2	1	1
1340	No	580	535	580	535	0	0	220	257	354	514	0	0	0	0	20	24	10	12	10	12
1341	No	1,027	1,359	1,027	1,359	0	0	370	391	596	782	398	398	0	0	25	30	15	18	10	12
1342	No	545	891	545	891	0	0	260	267	419	534	0	0	0	0	16	19	0	0	16	19
1343	No	535	600	535	600	0	0	250	280	403	560	0	0	0	0	29	35	0	0	29	35

TAZ	FT Lee TAZ	Population						Households		Automobiles		School Enrollment				Employment					
		Total		In Occupied Housing		In Group Quarters						Grade K-12		Colleges		Total		Retail		Non-Retail	
		2017	2045	2017	2045	2017	2045	2017	2045	2017	2045	2017	2045	2017	2045	2017	2045	2017	2045	2017	2045
1344	No	675	858	675	858	0	0	260	252	419	504	0	0	0	0	17	20	5	6	12	14
1345	No	900	624	900	624	0	0	285	213	459	426	0	0	0	0	5	6	5	6	0	0
1346	No	555	724	555	724	0	0	230	307	370	614	0	0	0	0	2	2	2	2	0	0
1347	No	270	635	270	635	0	0	100	416	161	832	0	0	0	0	1,063	1,282	100	121	963	1,161
1348	No	710	1,047	710	1,047	0	0	270	426	435	852	343	343	0	0	76	92	20	24	56	68
1349	No	865	824	865	824	0	0	350	282	564	564	1,058	1,058	0	0	106	128	30	36	76	92
1350	No	840	713	840	713	0	0	345	243	555	486	1,842	1,842	0	0	42	51	20	24	22	27
1351	No	760	947	760	947	0	0	285	366	459	732	0	0	0	0	20	24	10	12	10	12
1352	No	655	858	655	858	0	0	210	332	338	664	0	0	0	0	14	16	7	8	7	8
1353	No	950	1,259	950	1,259	0	0	355	322	572	644	0	0	0	0	79	95	25	30	54	65
1354	No	490	500	490	500	0	0	190	195	306	390	270	270	0	0	96	116	10	12	86	104
1355	No	670	800	670	800	0	0	270	320	435	640	0	0	0	0	95	115	0	0	95	115
1356	No	995	858	995	858	0	0	420	292	676	584	0	0	0	0	36	42	8	10	28	34
1357	No	1,215	1,236	1,215	1,236	0	0	360	391	580	782	0	0	0	0	35	42	0	0	35	42
1358	No	930	902	930	902	0	0	270	292	435	584	0	0	0	0	16	19	0	0	16	19
1359	No	865	1,147	865	1,147	0	0	340	391	547	782	0	0	0	0	172	207	0	0	172	207
		28,504	34,378	27,838	33,708	666	670	9,980	12,287	15,932	24,574	4,523	4,439	1,000	1,000	8,647	10,247	620	748	8,027	9,506

Hopewell



Source: Tri Cities Area Metropolitan Planning Organization, 2013

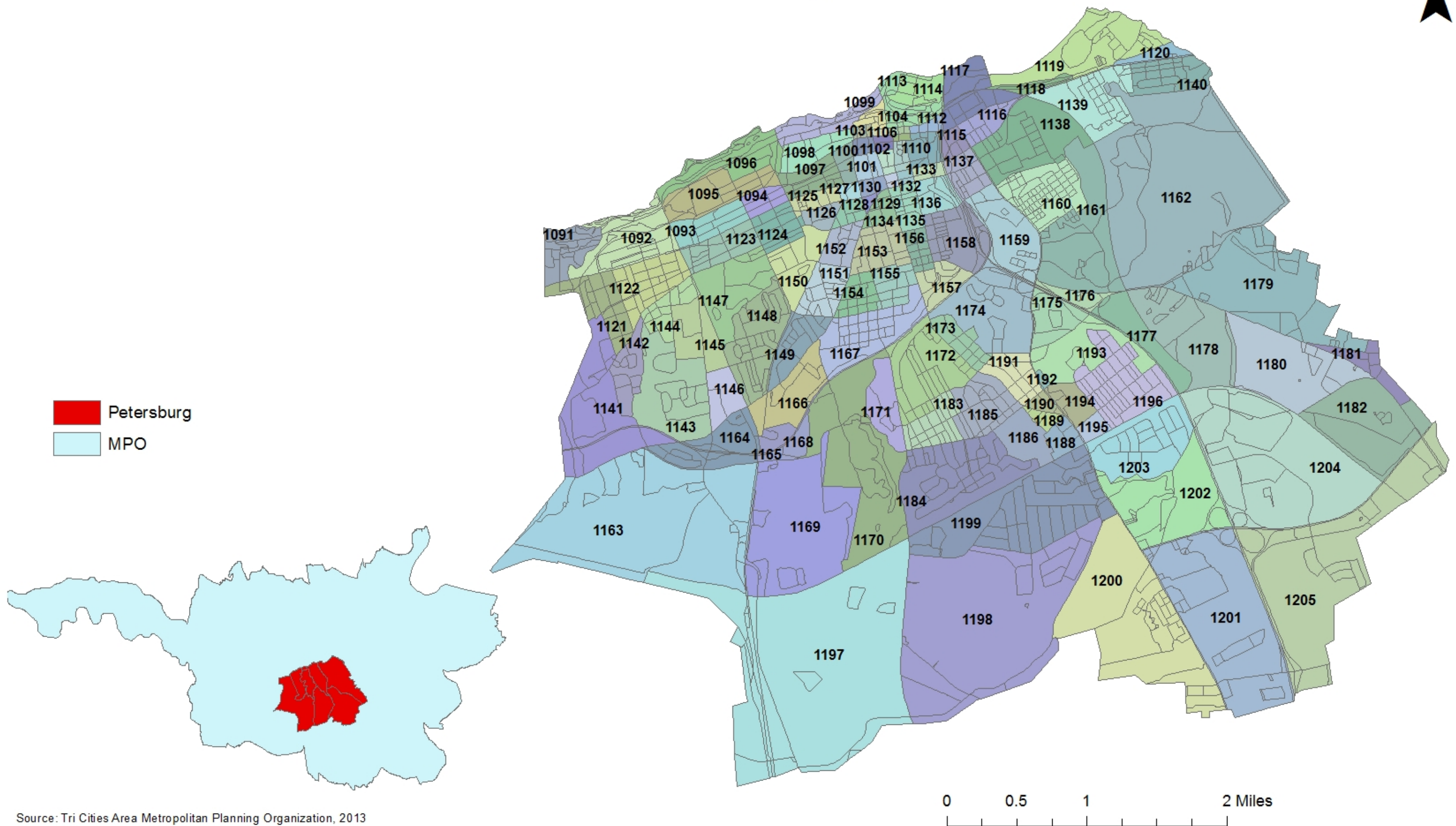


Hopewell

TAZ	FT Lee TAZ	Population						Households	Automobiles	School Enrollment				Employment							
		Total		In Occupied Housing Units		In Group Quarters				Grade K-12		Colleges		Total		Retail		Non-Retail			
		2017	2045	2017	2045	2017	2045			2017	2045	2017	2045	2017	2045	2017	2045	2017	2045		
1028	No	1,600	1,726	1,600	1,726	0	0	614	779	880	1,044	0	0	0	0	1	1	0	0	1	1
1029	No	238	216	238	216	0	0	110	100	158	134	0	0	0	0	9	9	0	0	9	9
1030	No	536	593	536	593	0	0	221	254	317	340	0	0	0	0	6	6	3	3	3	3
1031	No	635	678	635	678	0	0	241	283	346	379	0	0	0	0	62	64	13	13	49	51
1032	No	62	69	62	69	0	0	26	26	37	35	0	0	0	0	0	0	0	0	0	0
1033	No	367	374	144	150	223	224	199	81	285	109	618	602	0	0	744	767	12	12	732	755
1034	No	534	539	534	539	0	0	199	217	285	291	0	0	0	0	12	12	11	11	1	1
1035	No	995	953	995	953	0	0	361	398	518	533	0	0	0	0	47	49	0	0	47	49
1036	No	105	113	105	113	0	0	42	53	60	71	0	0	0	0	2	2	0	0	2	2
1037	No	188	188	188	188	0	0	70	73	100	98	0	0	0	0	56	58	0	0	56	58
1038	No	303	317	303	317	0	0	115	119	165	159	0	0	0	0	14	14	0	0	14	14
1039	No	182	184	182	184	0	0	62	76	89	102	0	0	0	0	836	863	34	35	802	828
1040	No	269	264	269	264	0	0	89	89	128	119	0	0	0	0	97	100	35	36	62	64
1041	No	178	173	178	173	0	0	53	56	76	75	0	0	0	0	122	126	12	12	110	114
1042	No	0	0	0	0	0	0	0	0	0	0	0	0	0	0	66	68	3	3	63	65
1043	No	0	0	0	0	0	0	0	0	0	0	0	0	0	0	203	209	5	5	198	204
1044	No	77	73	77	73	0	0	39	42	56	56	0	0	0	0	116	120	48	50	68	70
1045	No	223	245	223	245	0	0	80	107	115	143	0	0	0	0	151	156	0	0	151	156
1046	No	243	249	243	249	0	0	109	104	156	139	0	0	0	0	931	961	20	21	911	940
1047	No	3	0	0	0	3	0	0	0	0	0	0	0	0	0	110	113	13	13	97	100
1048	No	753	757	753	757	0	0	298	295	427	395	0	0	0	0	3	3	2	2	1	1
1049	No	782	775	782	775	0	0	287	297	412	398	658	633	0	0	24	25	0	0	24	25
1050	No	954	954	951	954	3	0	383	381	549	511	0	0	0	0	83	86	29	30	54	56
1051	No	14	14	14	14	0	0	5	6	7	8	0	0	0	0	85	88	0	0	85	88
1052	No	0	0	0	0	0	0	0	0	0	0	0	0	0	0	9	9	3	3	6	6
1053	No	0	0	0	0	0	0	0	0	0	0	0	0	0	0	164	169	0	0	164	169
1054	No	358	894	358	894	0	0	173	338	248	453	0	0	0	0	268	277	49	51	219	226
1055	No	426	455	426	455	0	0	206	210	295	281	1,782	1,689	0	0	391	404	0	0	391	404
1056	No	349	361	349	361	0	0	116	122	166	163	0	0	0	0	0	0	0	0	0	0
1057	No	309	322	309	322	0	0	116	112	166	150	0	0	0	0	0	0	0	0	0	0
1058	No	75	77	75	77	0	0	19	29	27	39	0	0	0	0	2	2	0	0	2	2
1059	No	465	486	465	486	0	0	185	191	265	256	0	0	0	0	0	0	0	0	0	0
1060	No	98	95	98	95	0	0	37	37	53	50	0	0	0	0	0	0	0	0	0	0
1061	No	520	516	520	516	0	0	202	184	290	247	0	0	0	0	20	21	0	0	20	21
1062	No	551	546	551	546	0	0	171	194	245	260	0	0	0	0	189	195	61	63	128	132
1063	No	64	56	64	56	0	0	17	20	24	27	0	0	0	0	138	143	119	123	19	20
1064	No	304	299	304	299	0	0	105	103	151	138	907	874	0	0	13	13	0	0	13	13
1065	No	0	2	0	2	0	0	0	1	0	1	0	0	0	0	1,605	1,657	19	20	1,586	1,637
1066	No	1,122	1,496	1,122	1,496	0	0	409	553	587	741	0	0	0	0	6	6	0	0	6	6
1067	No	828	1,054	828	1,054	0	0	302	389	433	521	0	0	0	0	0	0	0	0	0	0
1068	No	316	327	316	327	0	0	302	127	433	170	0	0	0	0	17	18	0	0	17	18
1069	No	300	324	300	324	0	0	129	230	185	308	0	0	0	0	1	1	0	0	1	1

TAZ	FT Lee TAZ	Population						Households	Automobiles	School Enrollment				Employment							
		Total		In Occupied Housing Units		In Group Quarters				Grade K-12		Colleges		Total		Retail		Non-Retail			
		2017	2045	2017	2045	2017	2045			2017	2045	2017	2045	2017	2045	2017	2045	2017	2045		
1070	No	238	368	108	238	130	130	40	40	60	60	0	0	0	0	0	0	0	0	0	0
1071	No	37	37	37	37	0	0	13	16	19	21	0	0	0	0	100	103	0	0	100	103
1072	No	1,313	1,400	1,300	1,387	13	13	516	530	740	710	288	280	0	0	350	361	58	60	292	301
1073	No	882	898	881	885	1	13	328	532	470	713	0	0	0	0	16	16	7	7	9	9
1074	No	410	413	410	413	0	0	121	334	174	448	0	0	0	0	7	7	0	0	7	7
1075	No	848	328	848	328	0	0	262	146	376	196	0	0	0	0	21	22	0	0	21	22
1076	No	1,291	688	1,291	688	0	0	450	305	645	409	681	622	0	0	0	0	0	0	0	0
1077	No	963	1063	863	963	100	100	300	300	450	450	0	0	0	0	0	0	0	0	0	0
1078	No	986	1,059	986	1,059	0	0	317	503	455	674	0	0	0	0	33	34	0	0	33	34
1079	No	207	206	207	206	0	0	316	90	453	121	0	0	0	0	7	7	0	0	7	7
1080	No	440	452	440	452	0	0	155	326	222	437	0	0	0	0	0	0	0	0	0	0
		<u>22,941</u>	<u>23,676</u>	<u>22,468</u>	<u>23,196</u>	<u>473</u>	<u>480</u>	<u>8,910</u>	<u>9,798</u>	<u>12,799</u>	<u>13,184</u>	<u>4,934</u>	<u>4,700</u>	<u>0</u>	<u>0</u>	<u>7,137</u>	<u>7,364</u>	<u>556</u>	<u>574</u>	<u>6,581</u>	<u>6,792</u>

Petersburg



Source: Tri Cities Area Metropolitan Planning Organization, 2013

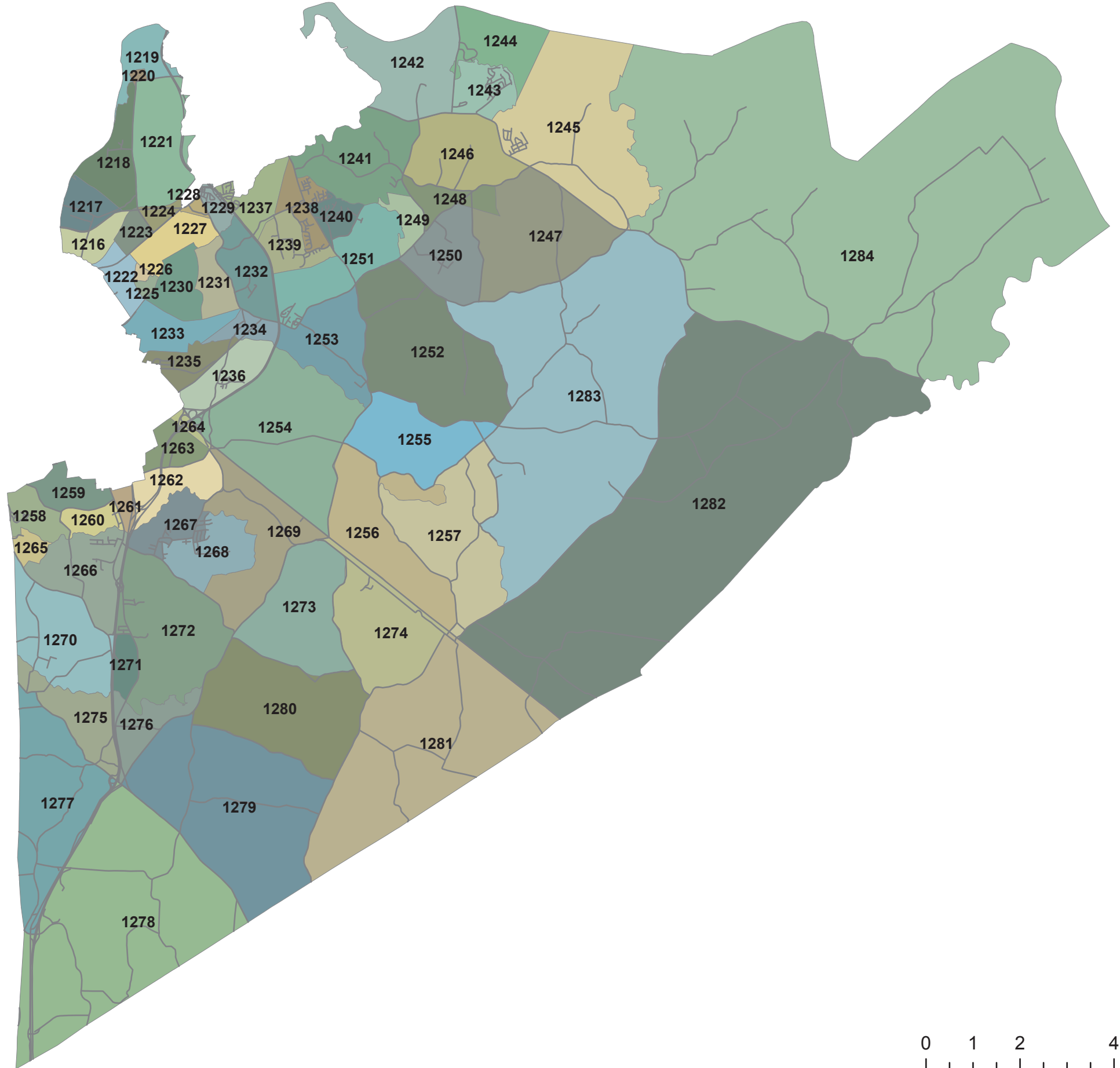
Petersburg

TAZ	FT Lee TAZ	Population						Households	Automobiles	School Enrollment				Employment							
		Total		In Occupied Housing Units		In Group Quarters				Grade K-12		Colleges		Total		Retail		Non-Retail			
		2017	2045	2017	2045	2017	2045			2017	2045	2017	2045	2017	2045	2017	2045	2017	2045		
1091	No	20	13	20	13	0	0	10	6	6	12	0	0	0	0	4	15	4	0	0	15
1092	No	0	0	0	0	0	0	0	0	0	0	0	0	0	0	263	3	263	3	0	0
1093	No	431	219	428	217	3	2	127	70	360	81	0	0	0	0	185	211	131	211	54	0
1094	No	158	99	158	99	0	0	50	32	150	13	0	0	0	0	1	0	0	0	1	0
1095	No	450	265	450	265	0	0	135	84	161	103	0	0	0	0	0	105	0	105	0	0
1096	No	94	54	93	48	1	6	29	16	80	106	0	0	0	0	29	42	0	0	29	42
1097	No	403	179	397	179	6	0	149	79	340	139	0	0	0	0	6	1	6	0	0	1
1098	No	426	265	426	265	0	0	182	115	350	12	0	0	0	0	44	0	0	0	44	0
1099	No	106	265	106	265	0	0	183	115	300	59	0	0	0	0	0	28	0	5	0	23
1100	No	56	42	56	42	0	0	34	34	17	80	0	0	0	0	26	0	0	0	26	0
1101	No	115	371	49	305	66	66	43	95	73	300	0	0	0	0	255	36	33	0	222	36
1102	No	202	398	202	398	0	0	96	179	61	500	0	0	0	0	569	0	2	0	567	0
1103	No	11	6	11	6	0	0	4	2	9	2	0	0	0	0	103	48	3	27	100	21
1104	No	134	180	13	59	121	121	5	23	18	100	0	0	0	0	53	180	0	2	53	178
1105	No	14	25	14	25	0	0	12	7	5	10	0	0	0	0	9	456	7	2	2	454
1106	No	155	820	155	820	0	0	89	350	2	25	0	0	0	0	308	79	4	0	304	79
1107	No	0	17	0	17	0	0	0	5	130	34	0	0	0	0	212	47	0	5	212	42
1108	No	227	132	227	132	0	0	60	34	230	36	174	174	0	0	43	5	23	3	20	2
1109	No	32	40	32	40	0	0	9	11	30	30	0	0	0	0	11	244	0	0	11	244
1110	No	112	90	97	72	15	18	29	21	70	90	0	0	0	0	77	188	9	18	68	170
1111	No	0	0	0	0	0	0	0	0	0	0	0	0	0	0	10	16	10	0	0	16
1112	No	0	0	0	0	0	0	0	0	0	0	0	0	0	0	28	16	9	7	19	9
1113	No	2	3	2	2	0	1	1	1	2	10	0	0	0	0	36	63	18	8	18	55
1114	No	158	67	158	67	0	0	61	31	41	13	0	0	0	0	0	7	0	7	0	0
1115	No	32	31	32	31	0	0	14	10	30	12	0	0	0	0	13	29	5	14	8	15
1116	No	200	99	200	99	0	0	74	46	64	175	68	43	0	0	71	14	2	0	69	14
1117	No	262	100	262	100	0	0	90	48	92	3	0	0	0	0	285	4	66	4	219	0
1118	No	0	0	0	0	0	0	0	0	0	0	0	0	0	0	20	8	0	2	20	6
1119	No	20	26	20	26	0	0	13	8	0	29	0	0	0	0	201	108	81	53	120	55
1120	No	49	45	49	45	0	0	24	15	40	187	0	0	0	0	8	176	2	0	6	176
1121	No	200	132	200	132	0	0	50	46	90	131	0	0	0	0	22	81	0	65	22	16
1122	No	835	835	835	829	0	6	331	331	545	50	0	0	0	0	471	97	0	2	471	95
1123	No	539	159	539	153	0	6	231	94	480	94	0	0	0	0	22	5	3	0	19	5
1124	No	509	360	424	259	85	101	95	77	207	72	0	0	0	0	0	18	0	0	0	18
1125	No	329	398	327	398	2	0	99	108	360	5	520	223	0	0	66	381	0	3	66	378
1126	No	190	283	190	279	0	4	56	78	160	13	0	0	0	0	70	15	0	0	70	15
1127	No	23	13	19	13	4	0	19	6	18	7	0	0	0	0	11	0	0	0	11	0
1128	No	26	40	26	40	0	0	25	16	25	37	0	0	0	0	39	53	2	0	37	53
1129	No	48	33	48	33	0	0	15	9	40	30	0	0	0	0	10	56	0	0	10	56
1130	No	100	166	100	166	0	0	35	48	25	74	0	0	0	0	80	11	18	2	62	9
1131	No	0	0	0	0	0	0	0	0	0	0	0	0	0	0	24	30	2	0	22	30
1132	No	50	173	50	173	0	0	24	67	40	36	0	0	0	0	874	22	7	14	867	8

TAZ	FT Lee TAZ	Population						Households	Automobiles	School Enrollment				Employment							
		Total		In Occupied Housing Units		In Group Quarters				Grade K-12		Colleges		Total		Retail		Non-Retail			
		2017	2045	2017	2045	2017	2045			2017	2045	2017	2045	2017	2045	2017	2045	2017	2045		
1133	No	41	135	41	135	0	0	22	12	34	16	0	0	0	0	1	51	0	2	1	49
1134	No	167	62	58	-47	109	109	38	26	80	17	0	0	0	0	83	24	0	6	83	18
1135	No	142	78	139	53	3	25	39	38	80	26	0	0	0	0	87	694	0	0	87	694
1136	No	206	113	181	113	25	0	76	37	70	109	0	0	0	0	19	1	0	0	19	1
1137	No	291	213	291	213	0	0	113	59	97	486	0	0	0	0	95	67	0	0	95	67
1138	No	510	299	510	299	0	0	149	108	430	33	0	0	0	0	23	69	3	0	20	69
1139	No	1,416	1,416	1,416	1,416	0	0	452	452	291	36	409	245	0	0	140	15	0	0	140	15
1140	No	115	82	115	79	0	3	40	22	66	117	0	0	0	0	22	78	0	2	22	76
1141	No	185	166	182	166	3	0	66	42	150	140	0	0	0	0	6	16	0	0	6	16
1142	No	483	313	483	313	0	0	121	84	187	76	0	0	0	0	0	112	0	0	0	112
1143	No	890	890	890	890	0	0	299	154	805	104	0	0	0	0	9	18	0	0	9	18
1144	No	280	213	268	201	12	12	96	62	251	79	540	275	0	0	0	5	0	0	0	5
1145	No	443	249	443	249	0	0	156	97	249	102	0	0	0	0	8	0	6	0	2	0
1146	No	37	307	37	307	0	0	12	144	25	537	0	0	0	0	0	7	0	0	0	7
1147	No	668	328	660	320	8	8	231	131	500	108	0	0	0	0	6	5	0	5	6	0
1148	No	723	696	720	690	3	6	269	290	610	61	347	336	0	0	11	2	0	0	11	2
1149	No	502	171	496	166	6	5	167	114	180	124	0	0	0	0	3	0	1	0	2	0
1150	No	425	156	425	153	0	3	126	79	360	99	528	370	0	0	0	5	0	0	0	5
1151	No	371	166	371	166	0	0	118	75	125	523		0	0	0	0	10	0	1	0	9
1152	No	107	365	107	315	0	50	38	116	123	118	0	0	0	0	145	2	6	0	139	2
1153	No	948	1,326	898	1,262	50	64	225	550	750	56	0	0	0	0	227	0	13	0	214	0
1154	No	587	361	587	360	0	1	290	141	500	55	0	0	0	0	1	5	0	5	1	0
1155	No	282	132	282	127	0	5	70	61	240	6	0	0	0	0	20	122	7	10	13	112
1156	No	335	240	330	235	5	5	139	73	97	45	0	0	0	0	59	171	2	0	57	171
1157	No	131	103	83	53	48	50	27	17	70	80	0	0	0	0	22	6	0	5	22	1
1158	No	497	235	449	185	48	50	160	87	380	270	0	0	0	0	122	12	0	2	122	10
1159	No	466	466	466	466	0	0	149	149	390	1,800	0	0	0	0	28	46	28	0	0	46
1160	No	0	0	0	0	0	0	0	0	0	0	0	0	0	0	6	17	0	0	6	17
1161	No	0	0	0	0	0	0	0	0	0	0	0	0	0	0	70	121	0	23	70	98
1162	No	0	0	0	0	0	0	0	0	0	0	0	0	0	0	42	0	0	0	42	0
1163	No	79	200	79	200	0	0	37	92	70	26	0	0	0	0	117	4	0	0	117	4
1164	No	582	393	462	273	120	120	147	97	95	76	0	0	0	0	19	56	0	0	19	56
1165	No	104	68	104	68	0	0	45	28	90	140	0	0	0	0	0	34	0	0	0	34
1166	No	338	189	335	186	3	3	127	87	425	18	504	378	0	0	7	93	6	0	1	93
1167	No	449	449	449	449	0	0	380	101	380	37	0	0	0	0	96	15	15	0	81	15
1168	No	34	26	34	26	0	0	16	10	35	60	0	0	0	0	0	5	0	5	0	0
1169	No	167	99	167	99	0	0	64	42	140	74	0	0	0	0	159	13	0	12	159	1
1171	No	635	290	635	290	0	0	330	120	533	360	0	0	0	0	0	2	0	2	0	0
1172	No	926	223	926	223	0	0	354	58	532	180	0	0	0	0	9	8	0	0	9	8
1173	No	224	224	224	224	0	0	86	88	186	121	0	0	0	0	26	21	0	0	26	21
1174	No	266	77	266	77	0	0	86	30	150	117	0	0	0	0	50	40	0	0	50	40
1175	No	323	323	323	323	0	0	134	134	295	295	0	0	0	0	1	1	0	0	1	1
1176	No	0	200	0	200	0	0	0	80	0	24	0	0	0	0	32	26	0	0	32	26

TAZ	FT Lee TAZ	Population						Households	Automobiles	School Enrollment				Employment							
		Total		In Occupied Housing Units		In Group Quarters				Grade K-12		Colleges		Total		Retail		Non-Retail			
		2017	2045	2017	2045	2017	2045			2017	2045	2017	2045	2017	2045	2017	2045	2017	2045		
1178	No	233	260	233	260	0	0	60	109	155	56	0	0	0	0	602	482	0	0	602	482
1179	No	400	40	400	40	0	0	149	20	383	36	0	0	0	0	52	41	13	10	39	31
1180	No	910	80	910	80	0	0	282	32	372	70	0	0	0	0	17	13	0	0	17	13
1181	No	167	223	167	223	0	0	67	150	45	35	0	0	0	0	16	12	3	2	13	10
1182	No	96	190	48	190	48	0	77	86	121	6	0	0	0	0	0	0	0	0	0	0
1183	No	398	180	398	180	0	0	122	74	315	22	0	0	0	0	19	15	4	3	15	12
1184	No	1,590	1,590	1,590	1,590	0	0	531	531	882	24	512	512	0	0	19	15	1	1	18	14
1185	No	53	26	53	26	0	0	14	7	25	0	0	0	0	0	0	0	0	0	0	0
1186	No	194	30	194	30	0	0	128	13	194	11	304	194	0	0	36	29	0	0	36	29
1187	No	0	50	0	50	0	0	0	20	0	107	0	0	0	0	84	0	6	0	78	0
1188	No	2	30	2	30	0	0	1	20	3	90	0	0	0	0	268	67	0	5	268	62
1189	No	29	49	29	40	0	9	20	16	20	0	0	0	0	95	214	44	0	51	214	
1190	No	58	180	49	180	9	0	22	75	273	8	0	0	0	0	24	76	15	35	9	41
1191	No	308	290	308	290	0	0	120	120	110	109	0	0	0	0	67	19	0	12	67	7
1193	No	1,372	1,372	1,372	1,372	0	0	492	492	500	45	0	0	0	0	119	54	10	0	109	54
1194	No	42	30	42	30	0	0	12	12	22	40	0	0	0	0	200	95	175	8	25	87
1195	No	274	300	274	300	0	0	95	125	230	200	0	0	0	0	10	160	6	140	4	20
1196	No	0	480	0	480	0	0	0	200	0	1,000	1,770	1,684	0	0	1	8	0	5	1	3
1197	No	42	100	42	100	0	0	11	300	35	155	0	0	0	0	230	1	150	0	80	1
1198	No	214	300	210	296	4	4	62	900	150	13	0	0	0	0	69	184	0	120	69	64
1199	No	1,226	1,226	1,226	1,226	0	0	493	493	1,030	40	0	0	0	0	71	55	62	0	9	55
1200	No	1,665	2,200	1,342	1,877	323	323	615	824	700	937	0	0	0	0	1,019	56	604	50	415	6
1201	No	305	55	305	55	0	0	119	24	341	0	0	0	0	0	2,796	2,648	89	483	2,707	2,165
1202	No	77	77	77	77	0	0	37	37	112	120	0	0	0	0	104	407	100	71	4	336
1203	No	702	343	699	340	3	3	238	141	624	420	0	0	0	0	52	368	0	32	52	336
1204	No	0	0	0	0	0	0	0	0	0	0	0	0	0	0	460	296	40	3	420	293
1205	No	468	460	468	460	0	0	154	192	302	600	0	0	0	0	370	0	4	0	366	0
		32918	28646	31785	27457	1133	1189	11918	11517	21666	13605	5676	4434	0	0	13130	10212	2123	1622	11007	8590



Prince George

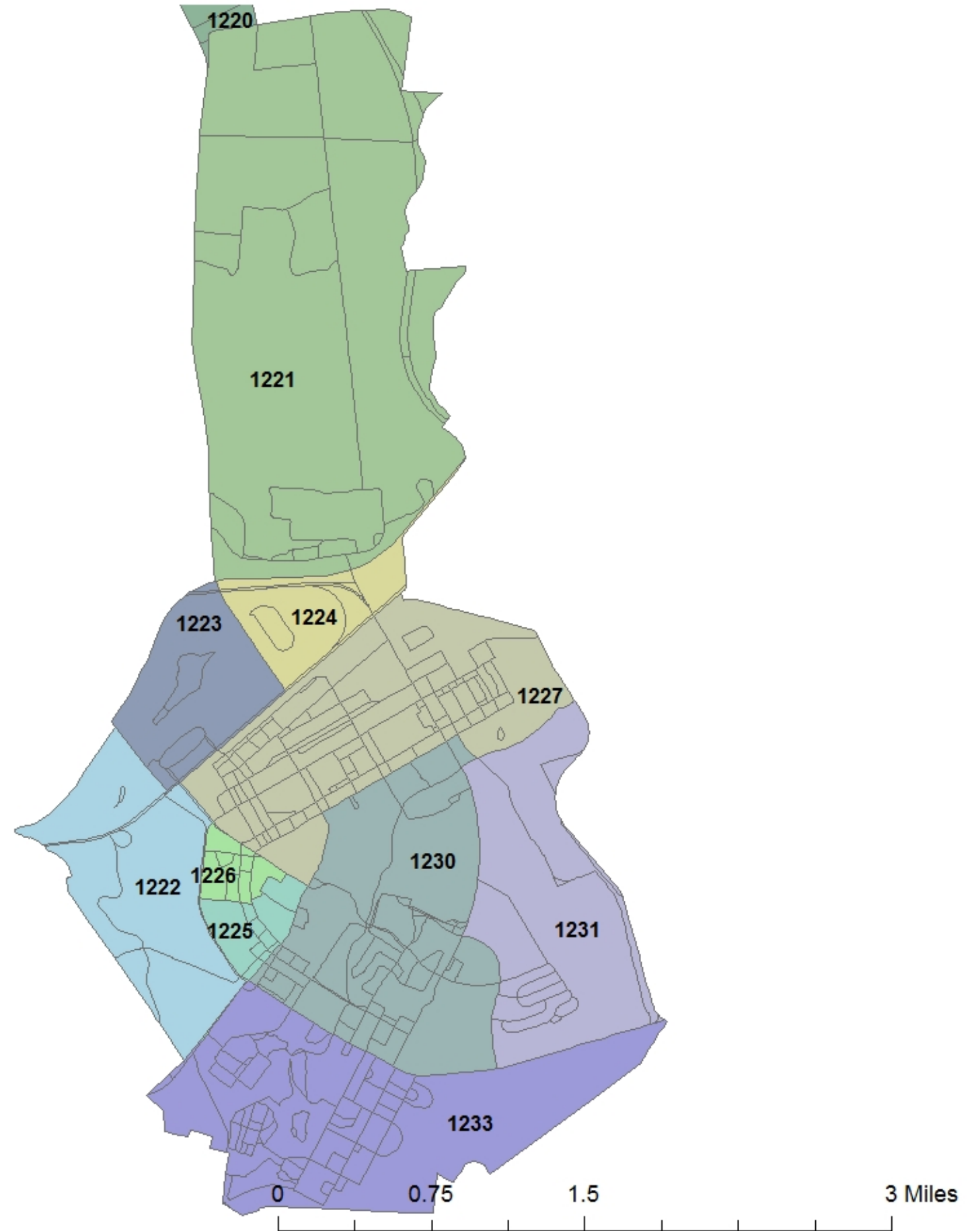
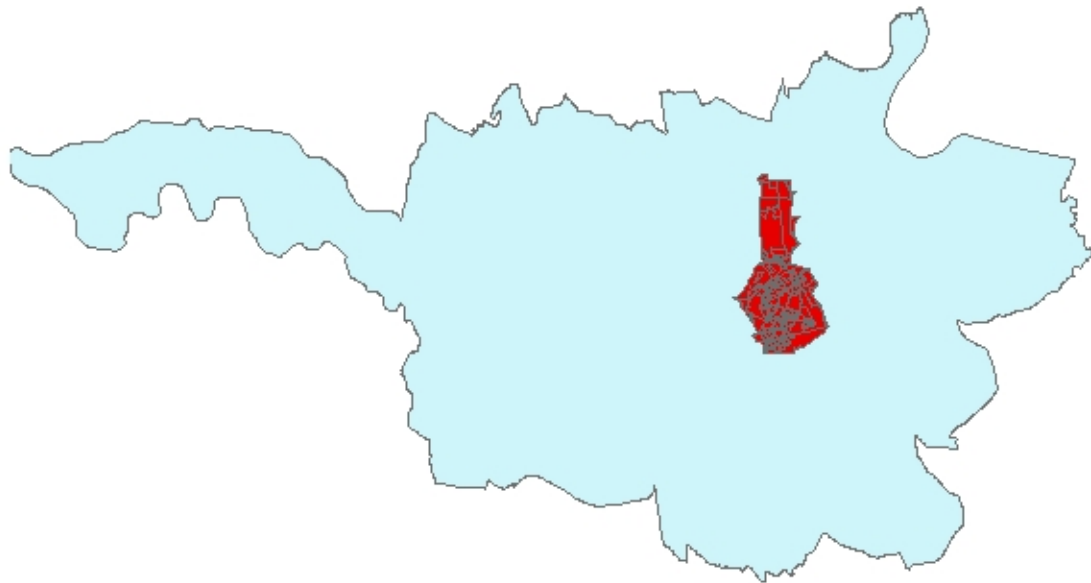


0 1 2 4 Miles

Fort Lee



-  Ft. Lee
-  MPO



Prince George with Fort Lee

TAZ	FT Lee TAZ	Population						Households	Automobiles	School Enrollment				Employment							
		Total		In Occupied Housing Units		In Group Quarters				Grade K-12		Colleges		Total		Retail		Non-Retail			
		2017	2045	2017	2045	2017	2045			2017	2045	2017	2045	2017	2045	2017	2045	2017	2045		
1216	No	0	312	0	312	0	0	0	160	0	293	0	0	0	0	674	635	200	188	474	447
1217	No	400	390	0	390	400	0	40	192	100	351	0	0	0	0	90	84	0	0	90	84
1218	No	340	320	340	320	0	0	172	160	376	293	0	0	0	0	31	30	0	0	31	30
1219	No	600	600	0	0	600	600	14	0	15	0	0	0	0	0	616	579	0	0	616	579
1220	Yes	1,200	1,200	0	0	1,200	1,200	0	0	0	0	0	0	0	0	361	340	0	0	361	340
1221	Yes	0	214	0	214	0	0	0	115	0	210	0	0	0	0	100	94	0	0	100	94
1222	Yes	0	0	0	0	0	0	0	0	0	0	0	0	0	0	0	0	0	0	0	0
1223	Yes	6,190	619	6,190	169	0	450	119	89	177	163	176	176	0	0	6,190	0	0	0	6,190	0
1224	Yes	800	1,785	0	285	800	1,500	0	149	227	273	0	0	0	0	4,000	5,819	0	0	4,000	5,819
1225	Yes	620	1,936	120	1,336	500	600	90	717	239	1,312	325	325	0	0	1,800	3,760	0	0	1,800	3,760
1226	Yes	600	942	300	142	300	800	150	149	17	273	0	0	0	0	900	1,692	0	0	900	1,692
1227	Yes	6,000	3,425	6,000	1,425	0	2,000	900	717	728	1,312	0	0	0	0	0	846	0	0	0	846
1228	No	27	1,184	27	1,184	0	0	11	631	35	1,155	0	0	0	0	934	0	417	0	517	0
1229	No	407	819	407	819	0	0	131	437	360	800	0	0	0	0	36	879	0	393	36	486
1230	Yes	3,003	2,684	1,403	1,184	1,600	1,500	650	631	1,500	1,155	0	0	0	0	4,539	34	100	0	4,439	34
1231	Yes	1,400	914	1,400	214	0	700	450	220	800	403	586	586	0	0	1,500	4,267	0	94	1,500	4,173
1232	No	346	321	346	321	0	0	135	279	348	511	0	0	0	0	100	1,410	21	0	79	1,410
1233	Yes	1,500	927	750	427	750	500	300	315	630	576	0	0	0	0	5,000	94	0	20	5,000	74
1234	No	658	561	658	561	0	0	288	230	450	421	975	517	0	0	50	4,700	41	0	9	4,700
1235	No	24	786	0	766	24	20	316	322	945	589	0	0	0	0	2	46	0	38	2	8
1236	No	15	772	0	757	15	15	82	403	155	737	636	636	0	0	1	2	0	0	1	2
1237	No	798	386	798	386	0	0	367	207	670	379	0	0	0	0	7	1	0	0	7	1
1238	No	950	347	950	347	0	0	385	177	1,365	324	0	0	0	0	142	7	69	0	73	7
1239	No	601	472	601	472	0	0	211	218	420	399	0	0	0	0	38	133	0	64	38	69
1240	No	423	419	423	419	0	0	205	177	355	324	0	0	0	0	6	36	0	0	6	36
1241	No	558	499	558	499	0	0	242	200	470	366	0	0	0	0	5	6	0	0	5	6
1242	No	14	107	14	107	0	0	4	57	13	104	0	0	0	0	21	5	0	0	21	5
1243	No	600	481	600	481	0	0	233	223	770	408	0	0	0	0	6	20	0	0	6	20
1244	No	120	116	120	116	0	0	52	68	92	124	0	0	0	0	33	6	0	0	33	6
1245	No	629	205	629	205	0	0	223	70	535	128	0	0	0	0	3	32	1	0	2	32
1246	No	363	1,193	363	1,193	0	0	150	637	290	1,166	0	0	0	0	11	3	10	1	1	2
1247	No	184	1,336	184	1,336	0	0	74	710	150	1,299	0	0	0	0	79	10	0	9	79	1
1248	No	820	1,523	820	1,523	0	0	312	637	515	1,166	0	0	0	0	1	74	0	0	1	74
1249	No	652	606	652	606	0	0	219	309	218	565	0	0	0	0	8	1	8	0	0	1
1250	No	216	419	216	419	0	0	87	222	180	406	0	0	0	0	16	8	0	8	16	0
1251	No	816	286	816	286	0	0	317	153	685	280	606	606	0	0	1,032	1,032	0	0	1,032	1,032
1252	No	543	205	543	205	0	0	213	109	664	199	0	0	0	0	31	31	0	0	31	31
1253	No	367	329	367	329	0	0	142	179	300	328	2,347	2,233	0	0	368	29	0	0	368	29
1254	No	18	154	0	134	18	20	109	70	252	128	797	797	0	0	1,189	1,189	0	0	1,189	1,189
1255	No	445	401	445	401	0	0	190	179	370	328	0	0	0	0	10	347	0	0	10	347
1256	No	185	160	185	160	0	0	71	50	126	92	0	0	0	0	243	9	0	0	243	9
1258	No	3	107	0	107	3	0	17	57	25	104	0	0	0	0	0	228	0	0	0	228

TAZ	FT Lee TAZ	Population						Households	Automobiles	School Enrollment				Employment							
		Total		In Occupied Housing Units		In Group Quarters				Grade K-12		Colleges		Total		Retail		Non-Retail			
		2017	2045	2017	2045	2017	2045			2017	2045	2017	2045	2017	2045	2017	2045	2017	2045		
1259	No	94	27	94	27	0	0	57	14	100	26	0	0	0	0	48	0	3	0	45	0
1260	No	109	107	109	107	0	0	59	78	119	143	0	0	0	0	10	45	0	3	10	42
1261	No	28	27	28	27	0	0	13	26	20	48	0	0	0	0	52	9	0	0	52	9
1262	No	215	169	215	169	0	0	79	78	135	143	0	0	0	0	0	50	0	0	0	50
1263	No	61	303	61	303	0	0	24	163	57	298	499	467	0	0	4	0	0	0	4	0
1264	No	5	432	5	432	0	0	4	230	5	421	0	0	0	0	22	4	0	0	22	4
1265	No	9	343	0	338	9	5	140	276	520	505	0	0	0	0	105	20	14	0	91	20
1266	No	556	1,202	556	1,202	0	0	241	641	474	1,173	0	0	0	0	119	99	12	13	107	86
1267	No	794	641	794	641	0	0	345	457	596	836	0	0	0	0	2	112	1	11	1	101
1268	No	812	1,496	812	1,496	0	0	394	641	742	1,173	0	0	0	0	9	2	0	1	9	1
1269	No	650	285	650	285	0	0	273	151	542	276	455	962	0	0	871	871	25	0	846	871
1270	No	396	347	396	347	0	0	166	123	564	225	0	0	0	0	19	42	1	23	18	19
1271	No	73	53	73	53	0	0	27	45	70	82	0	0	0	0	0	18	0	1	0	17
1272	No	260	276	260	276	0	0	101	191	225	350	0	0	0	0	35	0	0	0	35	0
1273	No	100	98	100	98	0	0	45	65	84	119	0	0	0	0	115	33	0	0	115	33
1274	No	404	187	404	187	0	0	169	99	426	181	0	0	0	0	451	108	10	0	441	108
1275	No	155	454	155	454	0	0	64	243	130	445	0	0	0	0	0	424	0	9	0	415
1276	No	217	775	217	775	0	0	88	412	180	754	0	0	0	0	0	0	0	0	0	0
1277	No	581	597	581	597	0	0	237	267	500	489	0	0	0	0	0	0	0	0	0	0
1278	No	819	873	819	873	0	0	404	412	1,016	754	0	0	0	0	0	0	0	0	0	0
1279	No	545	606	545	606	0	0	265	297	460	544	0	0	0	0	0	0	0	0	0	0
1280	No	244	712	244	712	0	0	101	376	312	688	0	0	0	0	0	0	0	0	0	0
1281	No	729	739	729	739	0	0	294	446	610	816	0	0	0	0	0	0	0	0	0	0
1282	No	825	347	825	347	0	0	371	186	1,123	340	0	79	0	0	0	0	0	0	0	0
1283	No	819	695	819	695	0	0	435	371	1,485	679	0	0	0	0	0	0	0	0	0	0
1284	No	401	347	401	347	0	0	185	186	369	340	0	0	0	0	0	0	0	0	0	0
	Total	43,336	42,600	37,117	32,690	6,219	9,910	12,252	17,099	26,431	31,291	7,402	7,384	-	-	32,035	30,355	933	876	31,102	29,479
	FT Lee	21,313	14,646	16,163	5,396	5,150	9,250	2,659	3,102	4,318	5,677	1,087	1,087	-	-	24,390	16,946	100	114	24,290	16,832
	Co. Only	22,023	27,954	20,954	27,294	1,069	660	9,593	13,997	22,113	25,615	6,315	6,297	-	-	7,645	13,409	833	762	6,812	12,647